

# A-9

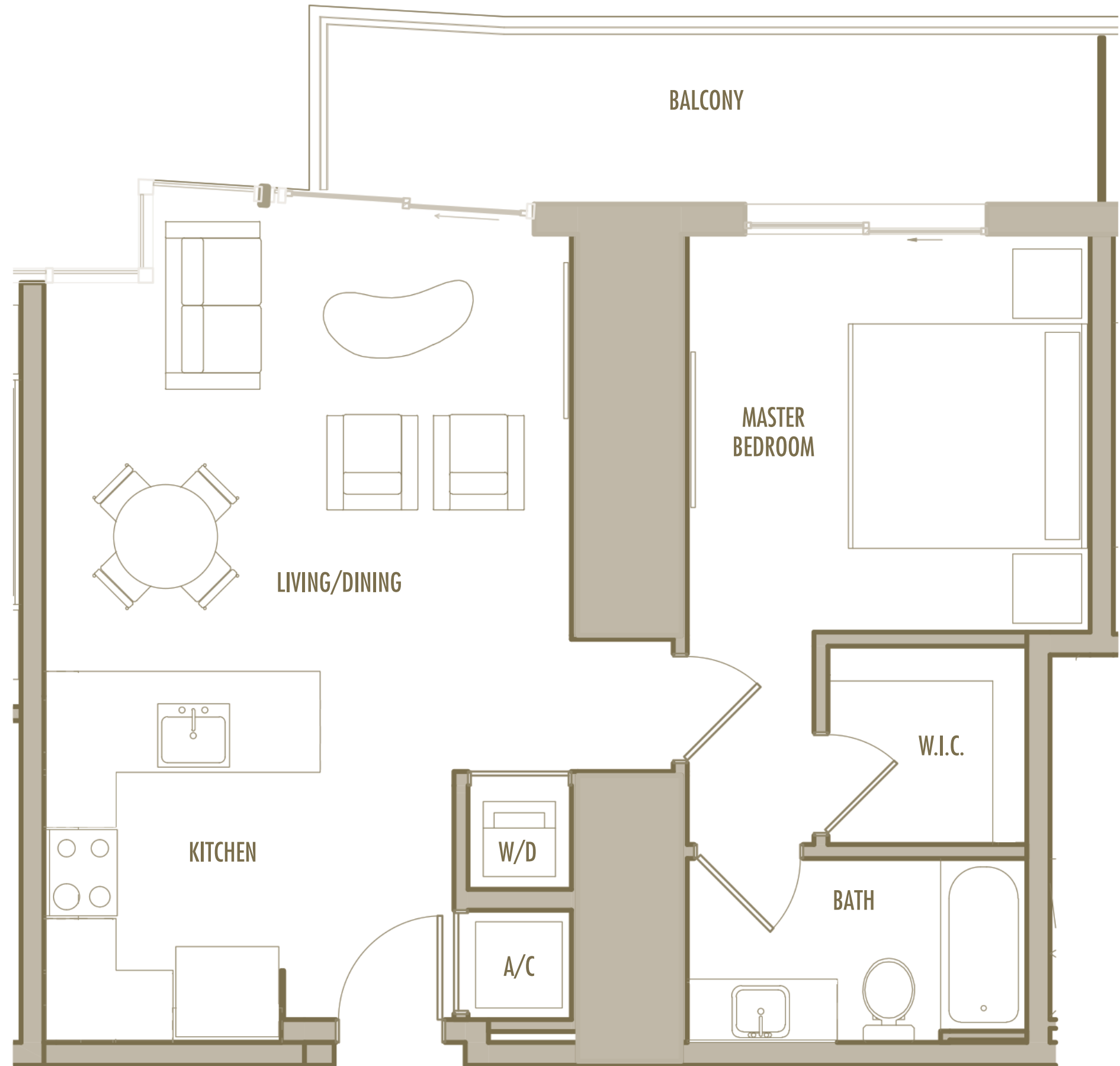
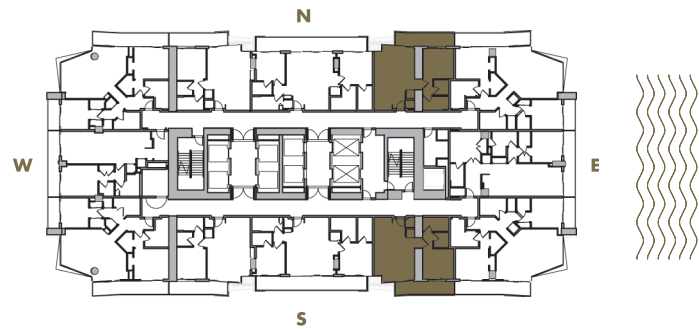
1 BEDROOM + 1 BATHROOM

LEVELS : 54

INTERIOR : 750 SqFt 70 SqM

BALCONY : 130 SqFt 12 SqM

TOTAL : 880 SqFt 82 SqM



Given the nature of condominium ownership, the Unit boundaries are precisely defined in such a manner so that all components of the Building which are (or are potentially) utilized either by other Units or the Common Elements are excluded from the Unit. This would exclude, for instance, all structural walls, columns etc. and essentially limits the Unit boundaries to the interior airspace between the perimeter walls and excludes all interior structural components. For the precise Unit boundaries, see Section 3.2 of the Declaration. For your reference, the area of the Unit, determined in accordance with these defined Unit boundaries, is set forth hereon (and labeled as "Unit Area"). Please note that the unique way of defining the boundaries actually makes the Unit appear to be smaller than it actually would be if standard architectural measuring techniques were used. Typically, apartments are measured to the exterior boundaries of the exterior walls and to the centerline of interior demising walls or to the exterior of walls adjoining corridors or other Common Elements without excluding areas that may be occupied by columns or other structural components.

# A-10

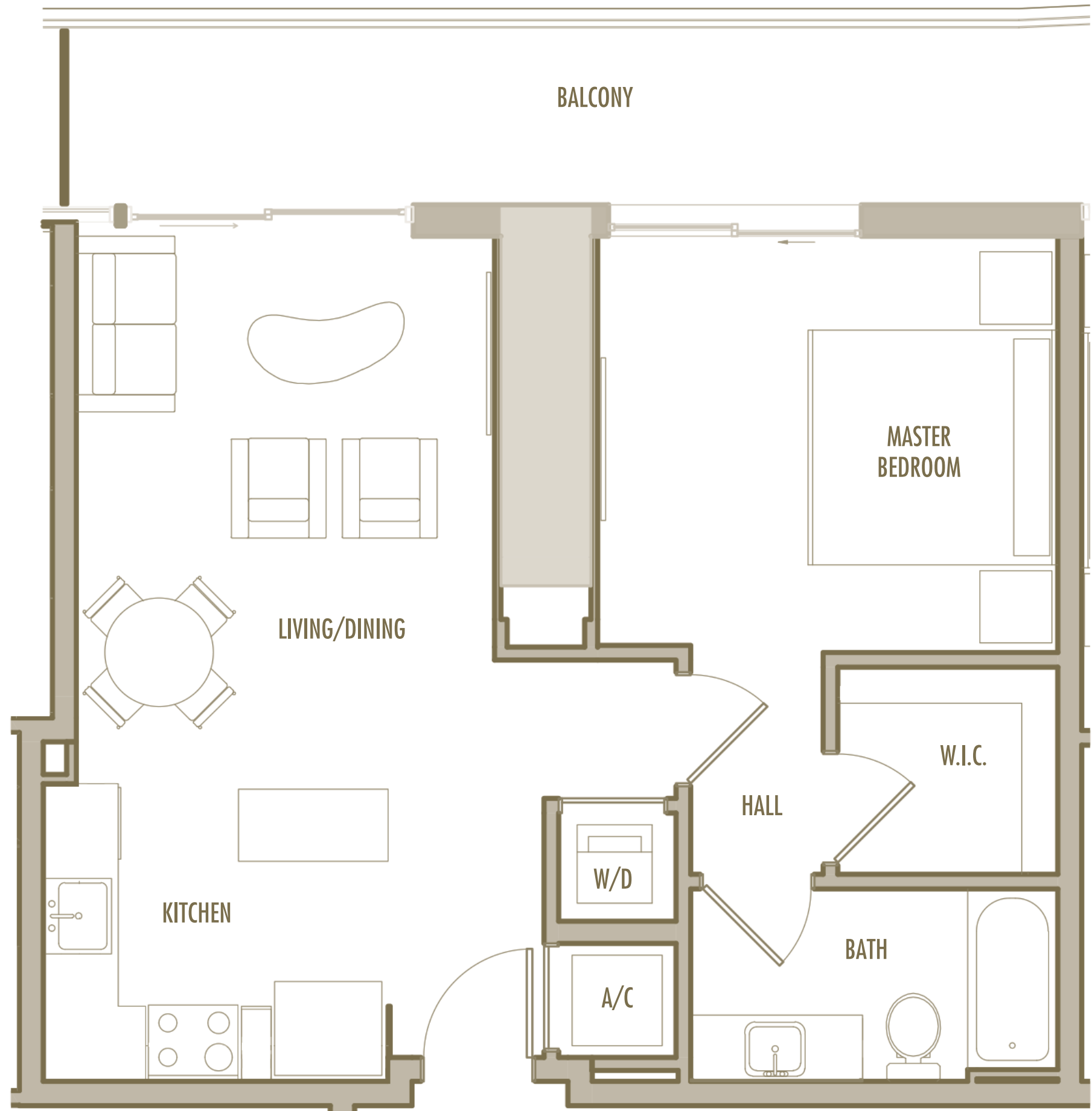
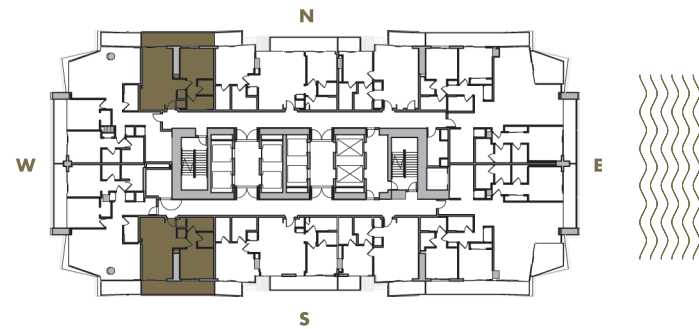
1 BEDROOM + 1 BATHROOM

LEVELS : 58-59

INTERIOR : 695 SqFt 65 SqM

BALCONY : 150 SqFt 14 SqM

TOTAL : 845 SqFt 79 SqM



Given the nature of condominium ownership, the Unit boundaries are precisely defined in such a manner so that all components of the Building which are (or are potentially) utilized either by other Units or the Common Elements are excluded from the Unit. This would exclude, for instance, all structural walls, columns etc. and essentially limits the Unit boundaries to the interior airspace between the perimeter walls and excludes all interior structural components. For the precise Unit boundaries, see Section 3.2 of the Declaration. For your reference, the area of the Unit, determined in accordance with these defined Unit boundaries, is set forth hereon (and labeled as "Unit Area"). Please note that the unique way of defining the boundaries actually makes the Unit appear to be smaller than it actually would be if standard architectural measuring techniques were used. Typically, apartments are measured to the exterior boundaries of the exterior walls and to the centerline of interior demising walls or to the exterior of walls adjoining corridors or other Common Elements without excluding areas that may be occupied by columns or other structural components.

# A-11

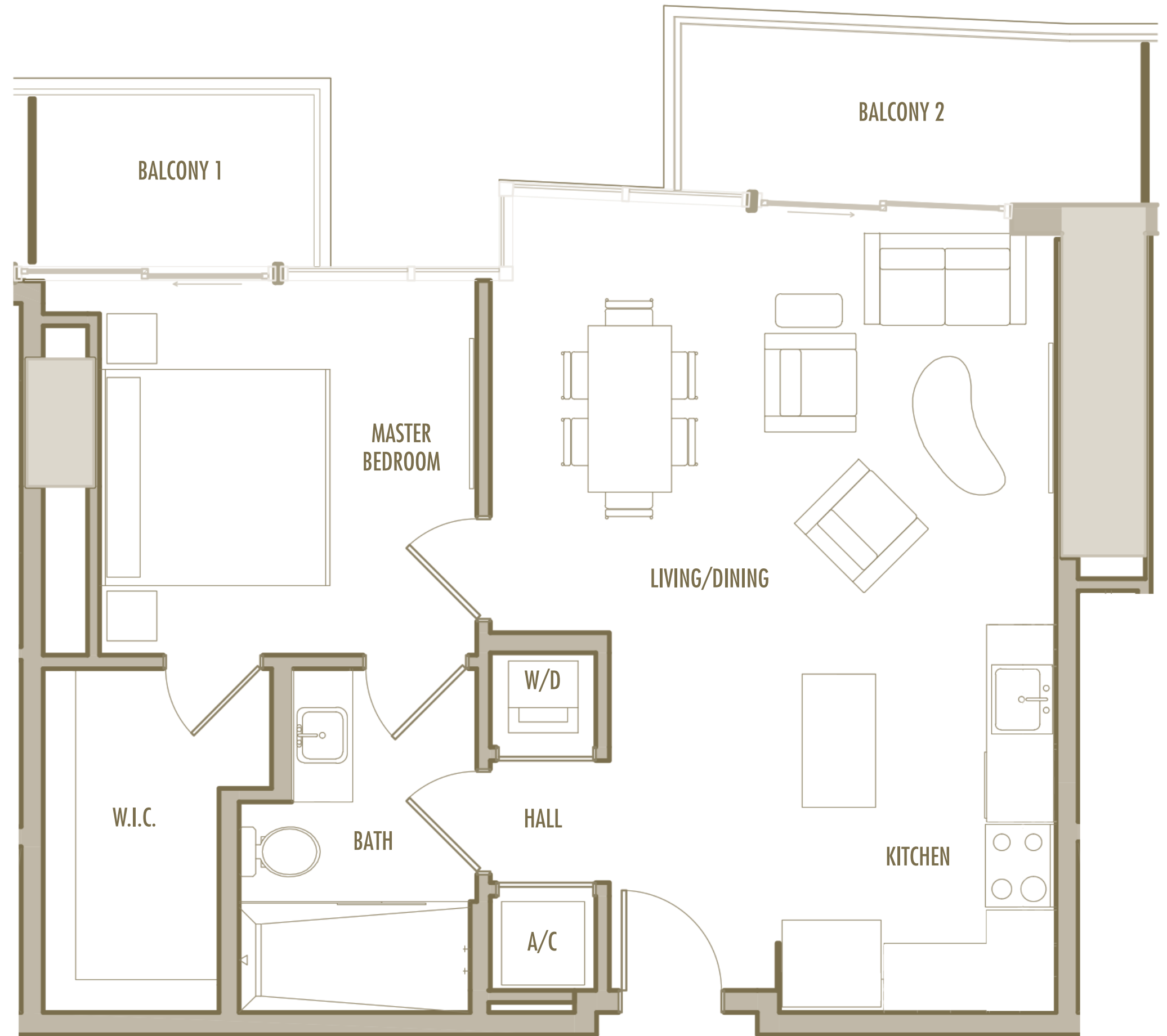
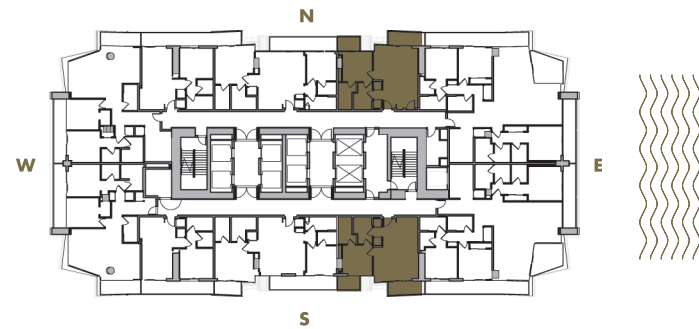
1 BEDROOM + 1 BATHROOM

LEVELS : 58-61

INTERIOR : 760 SqFt 71 SqM

BALCONY : 85-125 SqFt 8-12 SqM

TOTAL : 845-885 SqFt 79-82 SqM



Given the nature of condominium ownership, the Unit boundaries are precisely defined in such a manner so that all components of the Building which are (or are potentially) utilized either by other Units or the Common Elements are excluded from the Unit. This would exclude, for instance, all structural walls, columns etc. and essentially limits the Unit boundaries to the interior airspace between the perimeter walls and excludes all interior structural components. For the precise Unit boundaries, see Section 3.2 of the Declaration. For your reference, the area of the Unit, determined in accordance with these defined Unit boundaries, is set forth hereon (and labeled as "Unit Area"). Please note that the unique way of defining the boundaries actually makes the Unit appear to be smaller than it actually would be if standard architectural measuring techniques were used. Typically, apartments are measured to the exterior boundaries of the exterior walls and to the centerline of interior demising walls or to the exterior of walls adjoining corridors or other Common Elements without excluding areas that may be occupied by columns or other structural components.

# A-12

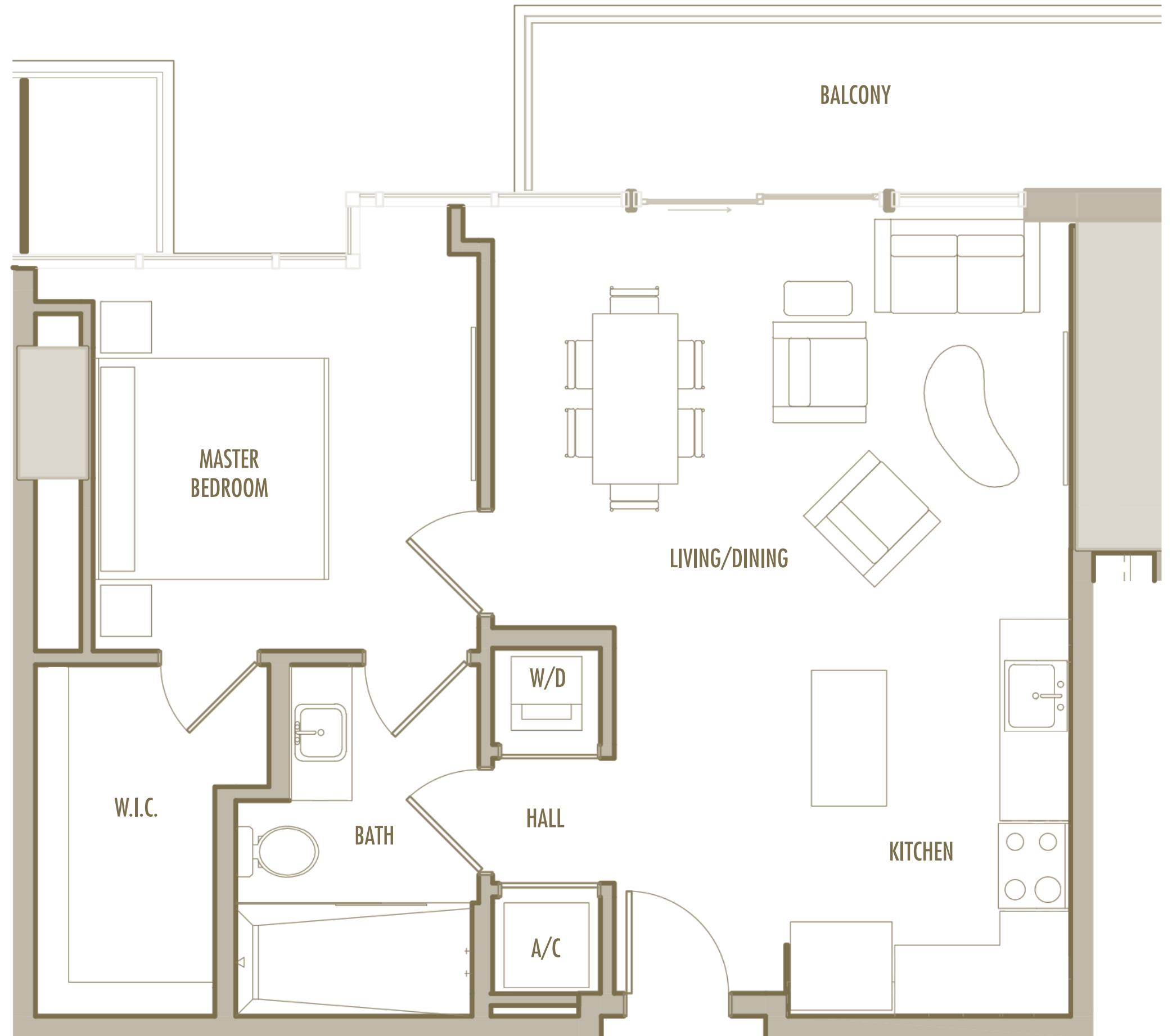
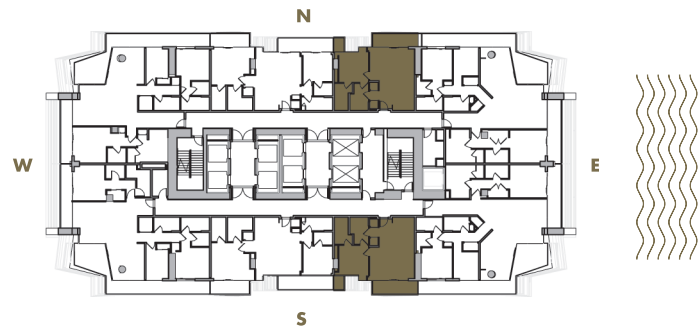
1 BEDROOM + 1 BATHROOM

LEVELS : 62

INTERIOR : 765 SqFt 71 SqM

BALCONY : 95 SqFt 9 SqM

TOTAL : 860 SqFt 80 SqM



Given the nature of condominium ownership, the Unit boundaries are precisely defined in such a manner so that all components of the Building which are (or are potentially) utilized either by other Units or the Common Elements are excluded from the Unit. This would exclude, for instance, all structural walls, columns etc. and essentially limits the Unit boundaries to the interior airspace between the perimeter walls and excludes all interior structural components. For the precise Unit boundaries, see Section 3.2 of the Declaration. For your reference, the area of the Unit, determined in accordance with these defined Unit boundaries, is set forth hereon (and labeled as "Unit Area"). Please note that the unique way of defining the boundaries actually makes the Unit appear to be smaller than it actually would be if standard architectural measuring techniques were used. Typically, apartments are measured to the exterior boundaries of the exterior walls and to the centerline of interior demising walls or to the exterior of walls adjoining corridors or other Common Elements without excluding areas that may be occupied by columns or other structural components.

# A-13

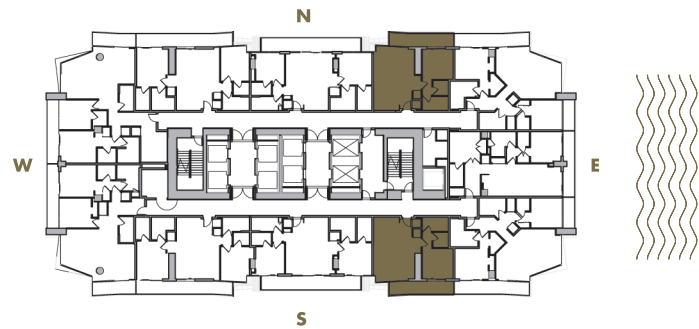
1 BEDROOM + 1 BATHROOM

LEVELS : 55-57

INTERIOR : 750 SqFt 70 SqM

BALCONY : 135-145 SqFt 12,5-13,5 SqM

TOTAL : 885-895 SqFt 82-83 SqM



Given the nature of condominium ownership, the Unit boundaries are precisely defined in such a manner so that all components of the Building which are (or are potentially) utilized either by other Units or the Common Elements are excluded from the Unit. This would exclude, for instance, all structural walls, columns etc. and essentially limits the Unit boundaries to the interior airspace between the perimeter walls and excludes all interior structural components. For the precise Unit boundaries, see Section 3.2 of the Declaration. For your reference, the area of the Unit, determined in accordance with these defined Unit boundaries, is set forth hereon (and labeled as "Unit Area"). Please note that the unique way of defining the boundaries actually makes the Unit appear to be smaller than it actually would be if standard architectural measuring techniques were used. Typically, apartments are measured to the exterior boundaries of the exterior walls and to the centerline of interior demising walls or to the exterior of walls adjoining corridors or other Common Elements without excluding areas that may be occupied by columns or other structural components.

# A-15

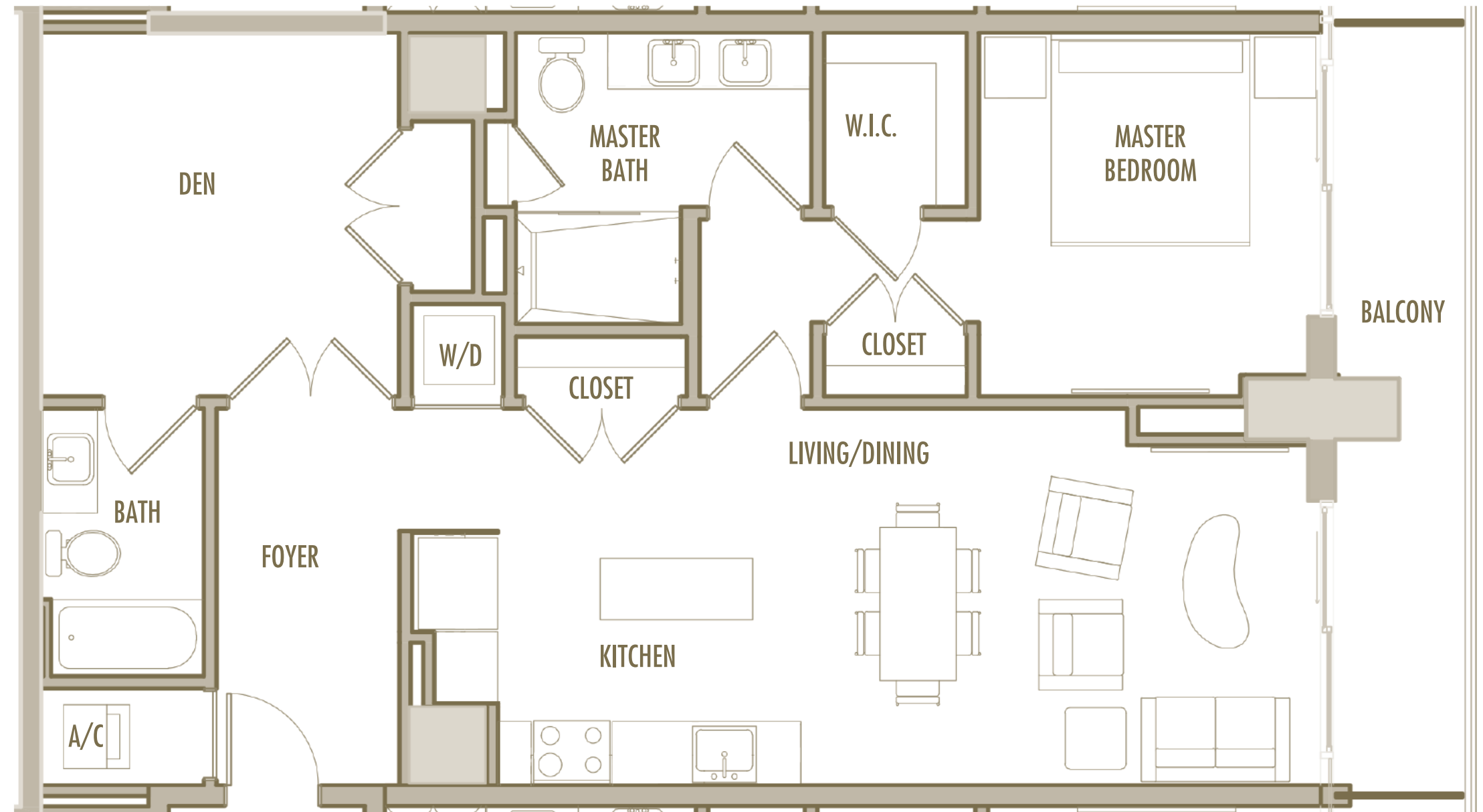
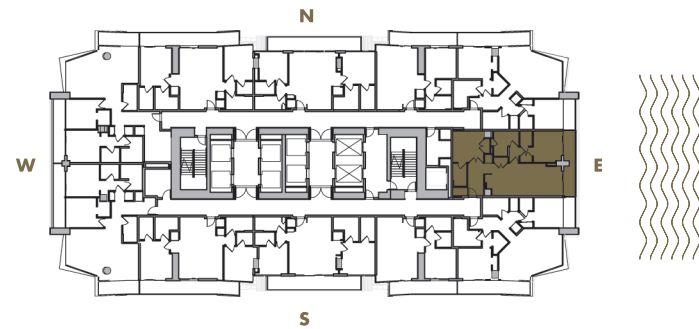
1 BEDROOM + DEN + 2 BATHROOM

LEVELS : 57

INTERIOR : 1,085 SqFt 101 SqM

BALCONY : 120 SqFt 11 SqM

TOTAL : 1,205 SqFt 112 SqM



Given the nature of condominium ownership, the Unit boundaries are precisely defined in such a manner so that all components of the Building which are (or are potentially) utilized either by other Units or the Common Elements are excluded from the Unit. This would exclude, for instance, all structural walls, columns etc. and essentially limits the Unit boundaries to the interior airspace between the perimeter walls and excludes all interior structural components. For the precise Unit boundaries, see Section 3.2 of the Declaration. For your reference, the area of the Unit, determined in accordance with these defined Unit boundaries, is set forth hereon (and labeled as "Unit Area"). Please note that the unique way of defining the boundaries actually makes the Unit appear to be smaller than it actually would be if standard architectural measuring techniques were used. Typically, apartments are measured to the exterior boundaries of the exterior walls and to the centerline of interior demising walls or to the exterior of walls adjoining corridors or other Common Elements without excluding areas that may be occupied by columns or other structural components.