



P

# PARAMOUNT

A WORLD OF LUXURY RESIDENCES AT

MIAMI WORLDCENTER





  
PARAMOUNT  
MIAMI WORLD CENTER

ARTIST CONCEPTUAL RENDERING. DEVELOPER MAY CHANGE WITHOUT NOTICE.



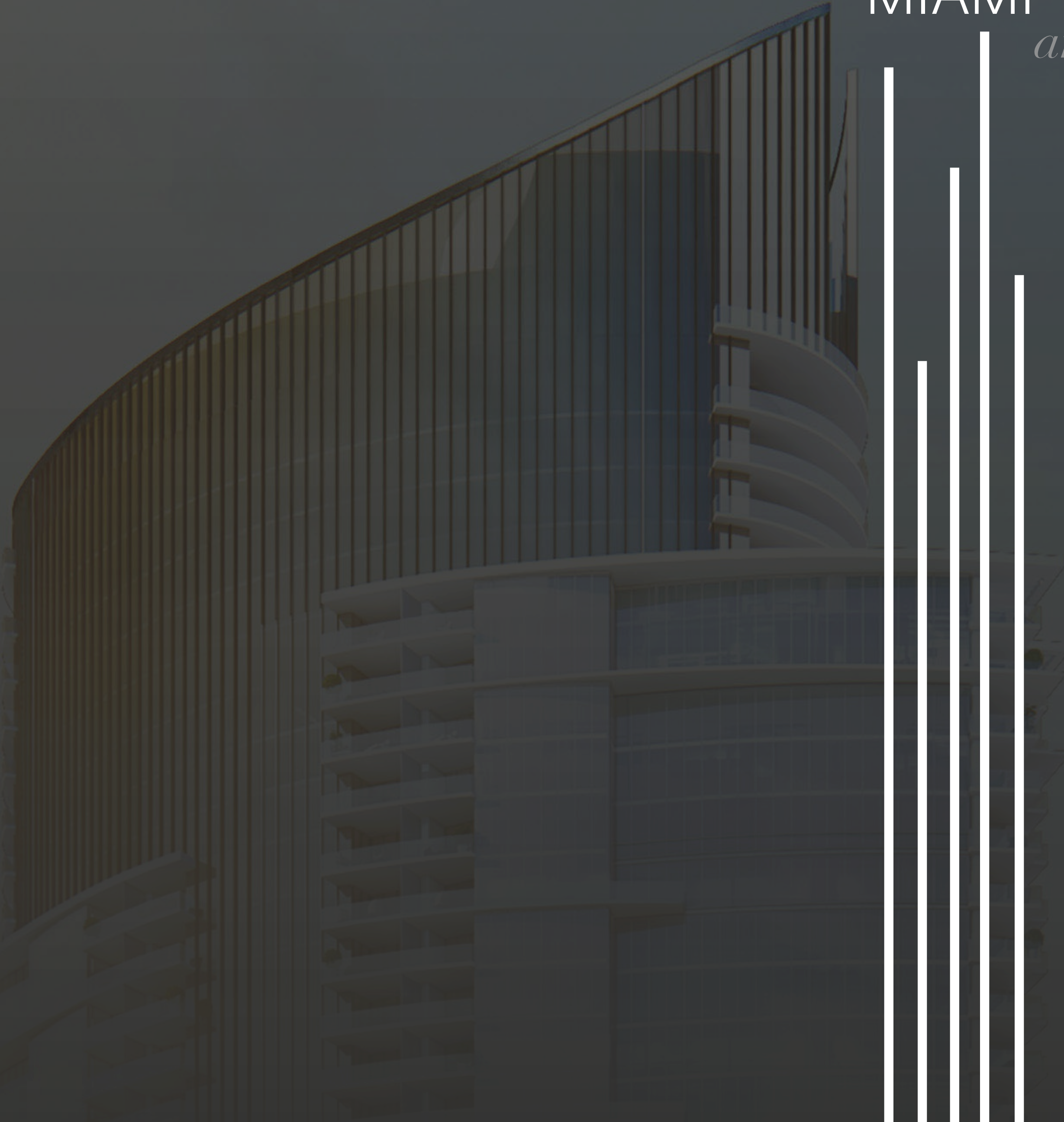






MIAMI

*america's city of the future*





# MIAMI, AMERICA'S CITY OF THE FUTURE

## *Center of the Americas*

MIAMI'S CENTRAL LOCATION CONTRIBUTES TO THE CITY'S ECONOMIC DIVERSIFICATION AND ITS IMPORTANCE AS A COMMERCIAL HUB FOR THE CONTINENT.

15M  
VISITORS  
A YEAR

41M  
FLY THRU  
MIA

5M  
CRUISE  
FROM MIA

1000+  
CORPORATE  
HEADQUARTERS

75  
FOREIGN  
CONSULATES

21  
FOREIGN  
TRADE OFFICES

32%↑  
FINANCE &  
INSURANCE  
INDUSTRY



# MIAMI, AMERICA'S CITY OF THE FUTURE

**Investment Value**  
PRICE PER SQUARE FOOT LUXURY CONDOS



“When comparing Miami to other major cities the price per square foot is substantially below.”

City	PPSF
London	\$6,000
Hong Kong	\$4,500
Paris	\$4,400
New York	\$4,000
Geneva	\$3,000
Dubai	\$2,500
Shanghai	\$2,000
Beijing	\$1,500
Singapore	\$1,500
<b>Miami</b>	<b>\$800</b>



# DOWNTOWN



MIAMI BEACH

STAR ISLAND

VIRGINIA KEY

KEY BISCAIYNE

BAYFRONT PARK

BRICKELL

PEREZ ART MUSEUM

FROST SCIENCE MUSEUM

BAYSIDE MARKETPLACE

DOWNTOWN

ADRIENNE ARSCHT PERFORMING ARTS CENTER

AMERICAN AIRLINES ARENA

MIAMI RIVER

MIAMI WORLD CENTER

FEC MIAMI CENTRAL STATION

I-395

I-95



# DOWNTOWN MIAMI: IN THE WORKS

\$11 BILLION IN NEW PUBLIC  
AND PRIVATE DEVELOPMENT

## TOP MEDICAL INSTITUTIONS

Jackson Memorial Hospital,  
Bascom Palmer Eye Institute,  
& UM Miller School of Medicine

## AMERICAN AIRLINES ARENA

Home of the Miami Heat

## ADRIENNE ARSHT CENTER

Performing Arts Center  
Film Production Studio

## BISCAYNE BOULEVARD

Grand Boulevard  
Links Streets, Parks and Bay

## PARAMOUNT

500+ Residences  
Over 40 Amenities

## MUSEUM PARK

Art, Science Museums  
29 Acres

## SKYRISE MIAMI

1000 ft. Tower  
Retail and Hospitality

## ALL ABOARD FLORIDA

Passenger Rail  
Mixed-use Retail and  
Hospitality



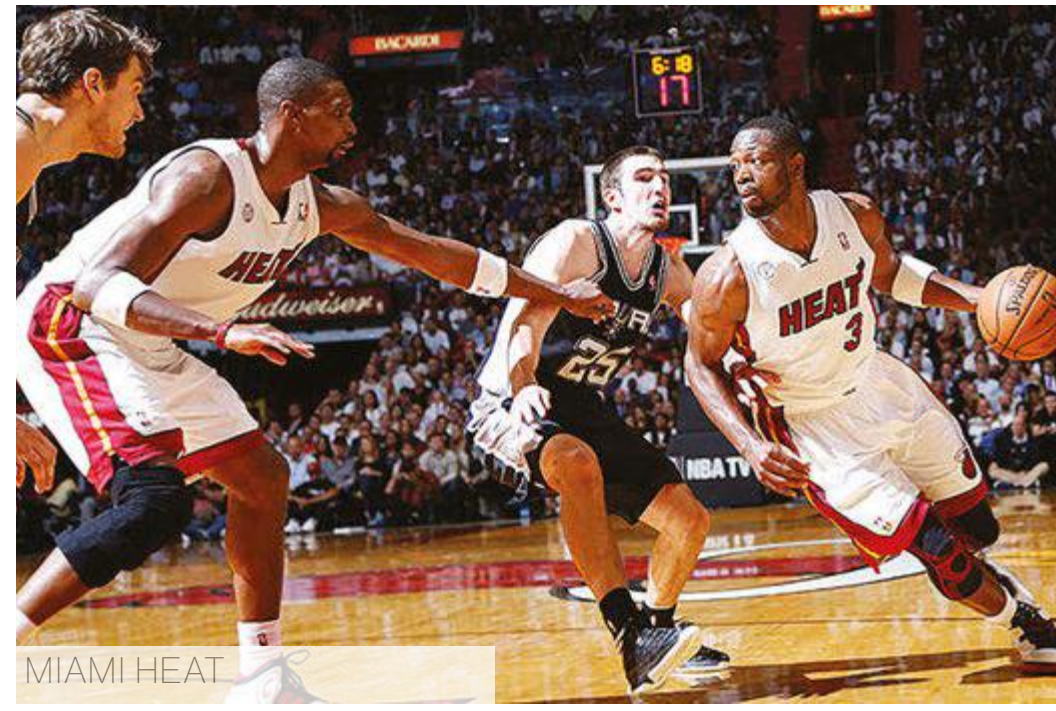




AN INCREDIBLE  
URBAN EXPERIENCE



DOWNTOWN MIAMI  
A 24/7 CITY



MIAMI HEAT

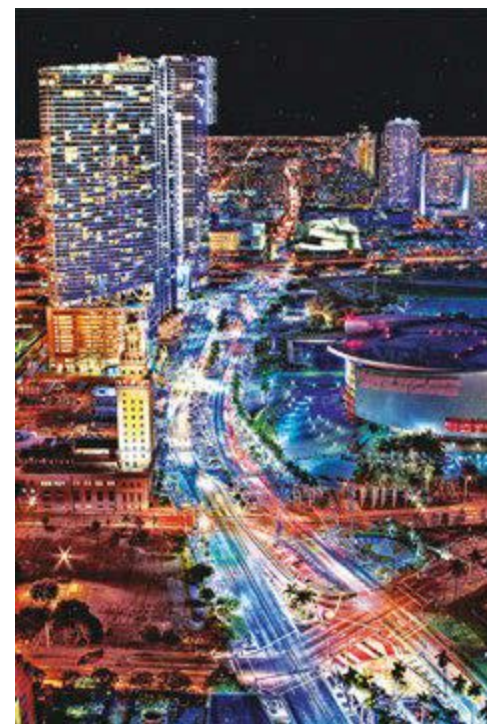


ADRIENNE ARSHT CENTER  
FOR PERFORMING ARTS

*live*



AMERICAN AIRLINES ARENA



ADRIENNE ARSHT CENTER  
FOR PERFORMING ARTS



FROST MUSEUM OF SCIENCE



*play*



PEREZ ART MUSEUM



# LOCATION ADVANTAGES

*Surrounded by \$3 Billion  
of new Public and Private Projects*

*Adrienne Arsht Center*



*Minutes from Miami Beach*



*Perez Art Museum Miami*



*Frost Museum of Science*



*American Airlines Arena*



ARTIST CONCEPTUAL RENDERING. DEVELOPER MAY CHANGE WITHOUT NOTICE.



# TRANSPORTATION ADVANTAGES

*Planes, Trains, and Automobiles  
Easy Access to the Best Transportation in Florida*

*Direct Interstate Accessibility*



*Port of Miami*



*Metrorail | Metromover*



*All Aboard Florida*



*Miami International Airport*



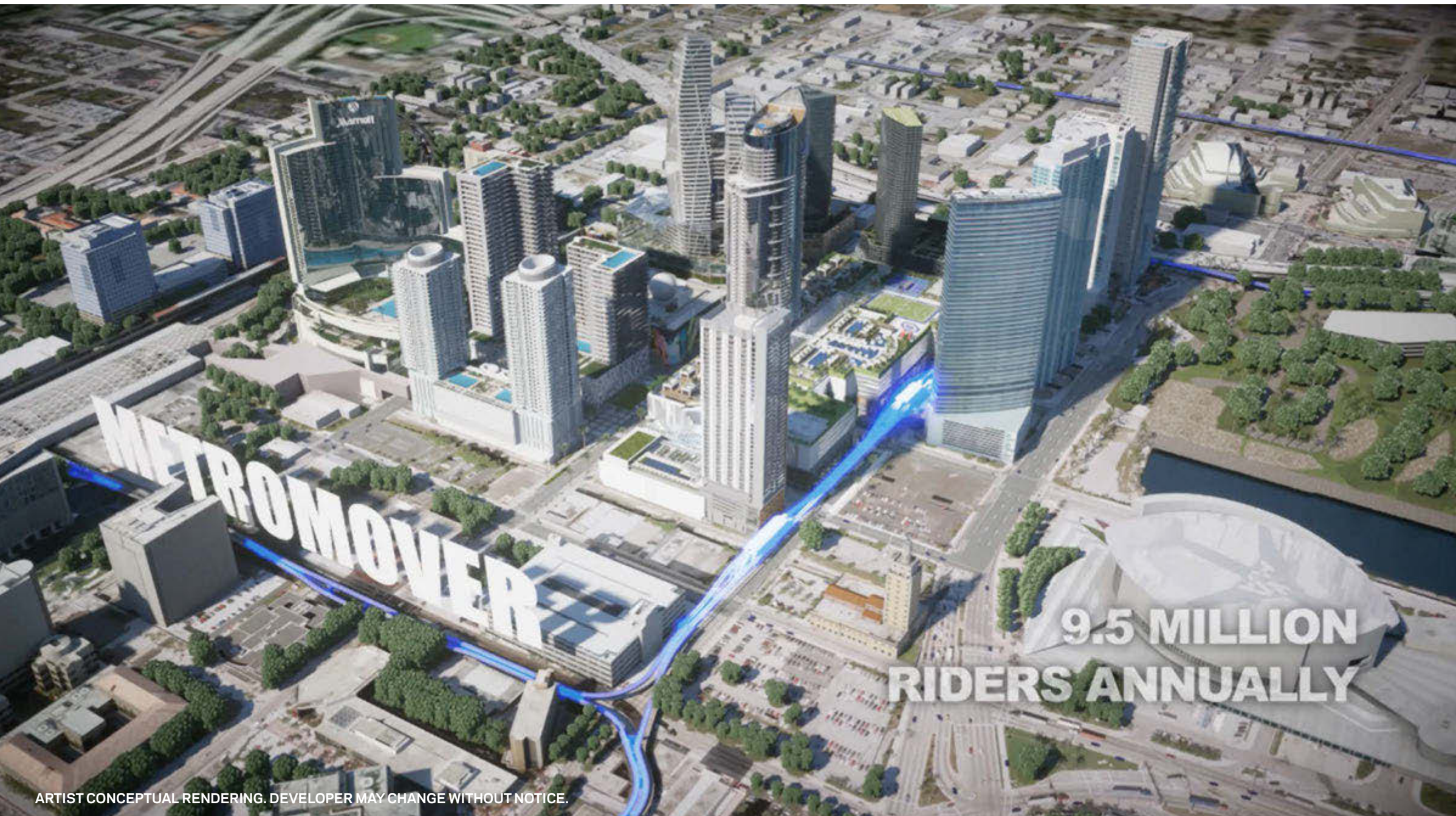
ARTIST CONCEPTUAL RENDERING. DEVELOPER MAY CHANGE WITHOUT NOTICE.



# *going somewhere?*

Miami Worldcenter provides unmatched accessibility and sits at the nexus of nearly 150 million transit trips per year, offering:

- Conveniently located next to I-95 and I-395
- Several Metromover stations
- Adjacent to Miami Central — new train station transporting visitors to and from Orlando in three hours
- Minutes from the Miami International Airport
- Thousands of new parking spaces, giving visitors to nearby attractions a convenient place to park.

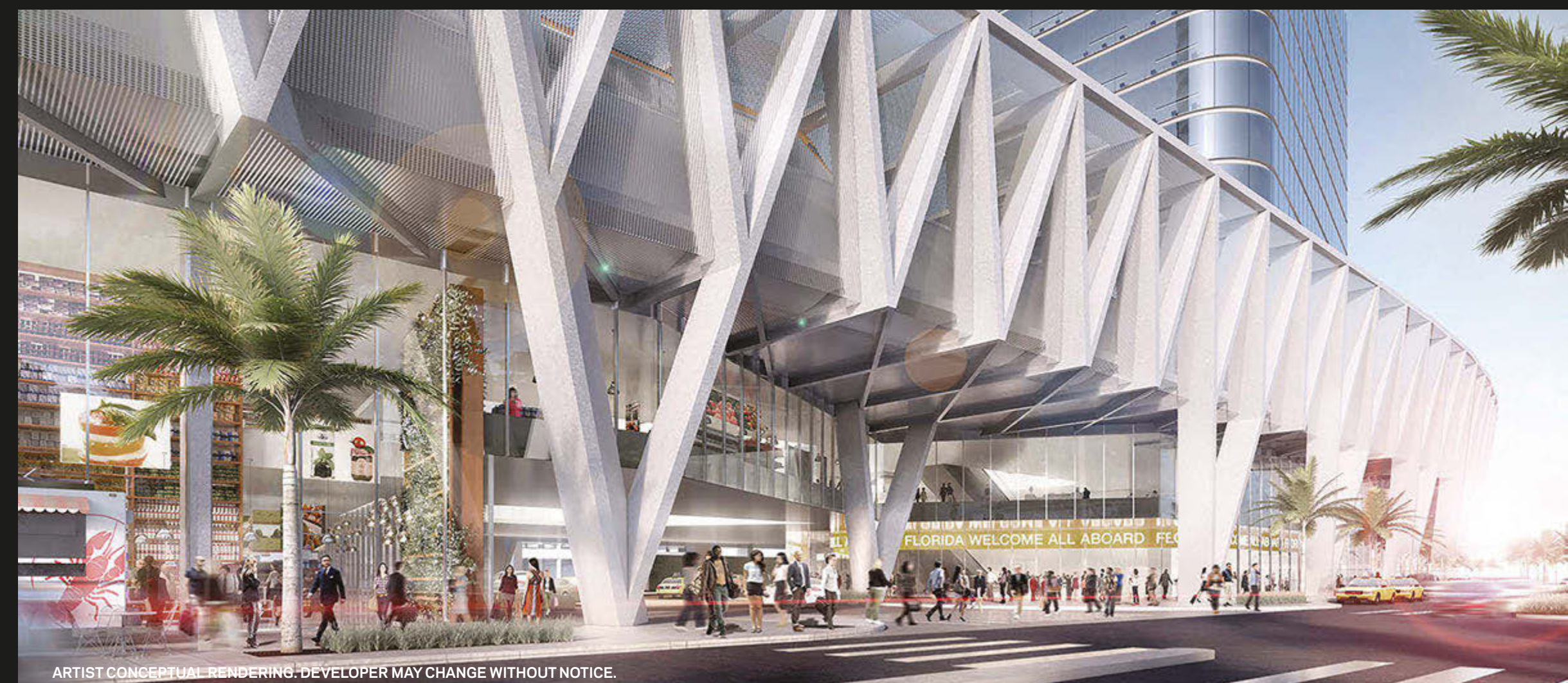


## TRANSPORTATION

### ALL ABOARD FLORIDA



ARTIST CONCEPTUAL RENDERING. DEVELOPER MAY CHANGE WITHOUT NOTICE.



ARTIST CONCEPTUAL RENDERING. DEVELOPER MAY CHANGE WITHOUT NOTICE.





# MIAMI WORLD CENTER

*“city within a city.”*





# MIAMI WORLD CENTER

*a master  
planned community*



**Miami Worldcenter,**  
2nd Largest Development in the U.S.  
30 acres surrounded by over  
\$3 billion of new public and private  
projects including:

mass transit  
museums  
shopping  
parks  
sports venues  
entertainment  
365,000 sq. ft. of convention space

&

**A SIGNATURE RESIDENTIAL TOWER**  
Exclusive location and right to create the  
premiere luxury residential experience at  
Miami Worldcenter.

THE  
CITY'S  
NEWEST  
HOTSPOT

---

---



# Miami Worldcenter

A Confluence of Retail, Dining, Culture and Entertainment Experiences



SOUTH BEACH

STAR, FISHER, HIBISCUS & PALM ISLANDS

PERFORMING ARTS CENTER

MUSEUM PARK

PÉREZ ART MUSEUM

AMERICAN AIRLINES ARENA

PORT OF MIAMI

FROST MUSEUM OF SCIENCE

BAYSIDE MARKETPLACE

BAYFRONT PARK

395

NAP OF THE AMERICAS

PROMENADE

FREEDOM TOWER

MIAMI DADE COLLEGE

Marriott

ALL ABOARD FLORIDA'S DOWNTOWN HUB

FEDERAL JUSTICE CAMPUS

Miami Worldcenter is one of the largest and most exciting urban developments in the U.S. - offering a diverse mix of retail, residential, office, hospitality, and entertainment components.

GOVERNMENT CENTER EXTENSION



# MIAMI WORLD CENTER

*World Class Shopping, Dining and Entertainment  
All an Elevator Ride Away*

*The Plaza @ MWC*



*Convention Center*



*7th Street Promenade*



*High Street Retail*



*Walkability - Wide Sidewalks*



ARTIST CONCEPTUAL RENDERING. DEVELOPER MAY CHANGE WITHOUT NOTICE.



# *The Plaza at Miami Worldcenter*



ARTIST CONCEPTUAL RENDERING. DEVELOPER MAY CHANGE WITHOUT NOTICE.



# Promenade at Miami Worldcenter

The Forbes Company  
& Taubman Properties

Two of the most sophisticated and world-renowned retailers, with over 100 years of combined experience and successful track records, join together to help build the future of downtown Miami.



ARTIST CONCEPTUAL RENDERING. DEVELOPER MAY CHANGE WITHOUT NOTICE.



# 7<sup>th</sup> Street Promenade



ARTIST CONCEPTUAL RENDERING. DEVELOPER MAY CHANGE WITHOUT NOTICE.



# Marriott Marquis Convention Center



ARTIST CONCEPTUAL RENDERING. DEVELOPER MAY CHANGE WITHOUT NOTICE.



33

PARAMOUNT





*elevate  
your  
life.*





# *Dramatic Entry*



ARTIST CONCEPTUAL RENDERING. DEVELOPER MAY CHANGE WITHOUT NOTICE.



# The Most Amenities in the World

## LOWER LEVEL

- Expansive double-height lobby
- Porte Cochère with 24-hour valet
- Direct access to Miami Worldcenter
- Basketball Half-Court
- Racquetball Court



1

## 7TH FLOOR AMENITIES

- |   |                                 |
|---|---------------------------------|
| Relaxation Areas                        | Indoor Sports Center            |
| Conservatory                            | State-of-the-art Fitness Center |
| Relaxation Lounge                       | Boxing Studio                   |
| Outdoor Lounge with seating and gardens | Aerobics Area                   |
| Spa/Salon                               | Entertainment Center            |
| Outdoor Bath Gardens                    | Game Room                       |
| Steam Showers                           | Kids Play Room                  |
| Yoga Studio                             | Recreation Lounge               |
| Treatment Rooms                         | Demo Kitchen                    |
| Hair/Nail Bar                           | Jam Room with Recording Studio  |
|   | Essentials                      |
|   | Food Market                     |
|   | Business Center                 |



2

4



## SKYDECK & LOUNGE

- Lounge
- Sunrise Pool
- Firepit
- Infinity Pool
- Sundeck
- Observatory
- Tai Chi Deck

## UPPER DECK

- Resort Pool
- Poolside Bungalows
- Poolside Daybeds
- Floating seating pods
- Sunken Pods with firepits
- Summer Kitchen with BBQ
- Children's Playground
- Soccer Field
- Tennis Courts
- Dog Park
- Jogging Path

3





# PARAMOUNT LOBBY

1 LOWER LEVEL



ARTIST CONCEPTUAL RENDERING. DEVELOPER MAY CHANGE WITHOUT NOTICE.



# 7<sup>TH</sup> FLOOR AMENITY ADVANTAGES

*Relax, Invigorate or just Jam Out-  
Elevate your Life*

*Outdoor Bath Gardens & Spa*



*Boxing Studio*



*Conservatory*



*Jam Room & Recording Studio*



*Outdoor Lounge*





# SPA AMENITY ENTRANCE

2 7<sup>TH</sup> FLOOR AMENITIES





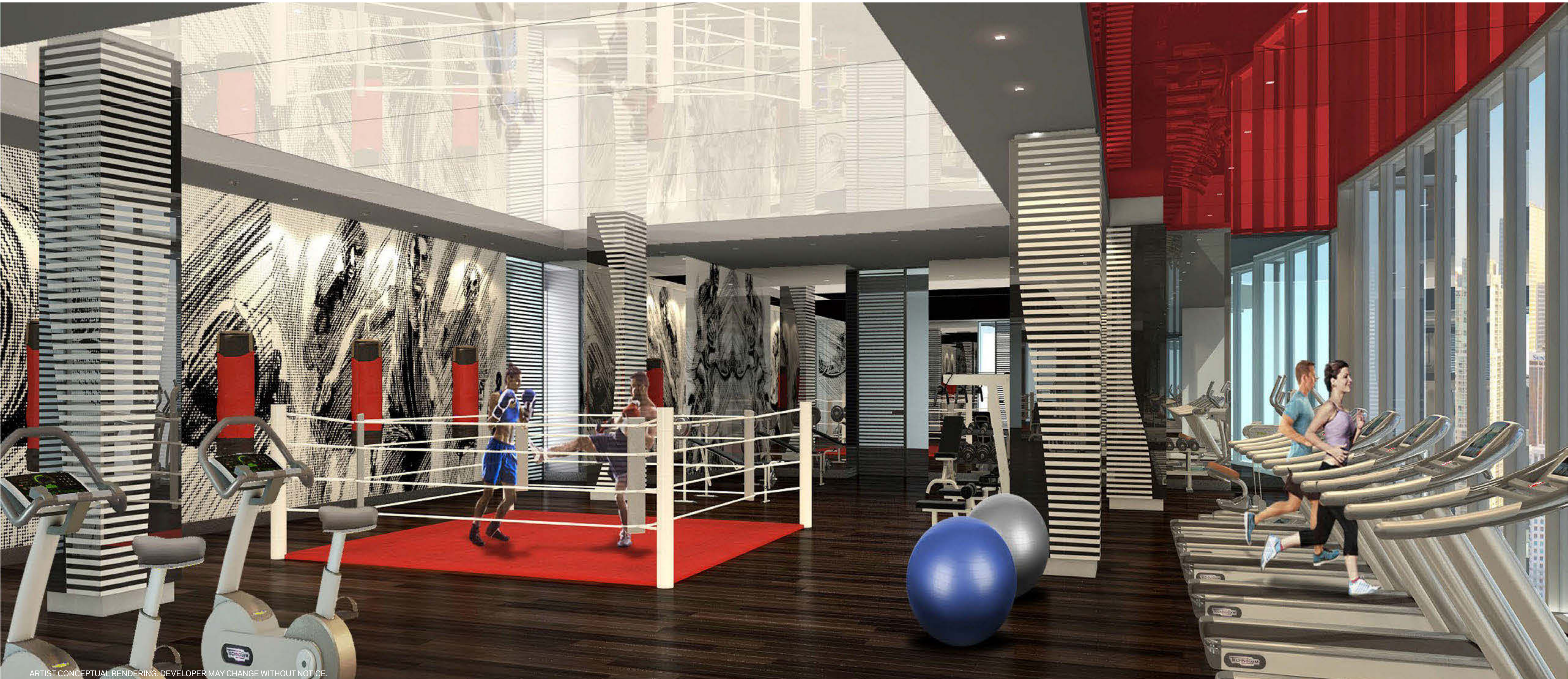


ARTIST CONCEPTUAL RENDERING. DEVELOPER MAY CHANGE WITHOUT NOTICE.



# FITNESS CENTER

2 7<sup>TH</sup> FLOOR AMENITIES



ARTIST CONCEPTUAL RENDERING. DEVELOPER MAY CHANGE WITHOUT NOTICE.



# CONSERVATORY

# 2<sup>7TH FLOOR</sup> AMENITIES





# JAM ROOM WITH RECORDING STUDIO

2 7<sup>TH</sup> FLOOR AMENITIES





# RESIDENCE LOUNGE

2 7TH FLOOR AMENITIES





RECREATION AREA

2 7TH FLOOR AMENITIES



ARTIST CONCEPTUAL RENDERING. DEVELOPER MAY CHANGE WITHOUT NOTICE.



OUTDOOR LOUNGE

2 7TH FLOOR AMENITIES



ARTIST CONCEPTUAL RENDERING. DEVELOPER MAY CHANGE WITHOUT NOTICE.



# UPPER DECK ADVANTAGES

*The Largest Private,  
Urban Amenity Deck in the US*

*Sports Complex with  
Soccer & Tennis*



*Private Playground & Dog Park*



*Summer Kitchen with BBQ*



*Resort Style Pool*



*Poolside Bungalows*



MIAMI WORLDCENTER

ARTIST CONCEPTUAL RENDERING. DEVELOPER MAY CHANGE WITHOUT NOTICE.



# SOCCER FIELD

3 UPPER  
DECK





# TENNIS COURTS

3 UPPER DECK





CHILDREN'S PLAYGROUND AND DOG PARK

3 UPPER DECK



ARTIST CONCEPTUAL RENDERING. DEVELOPER MAY CHANGE WITHOUT NOTICE.



# SUMMER KITCHENS WITH BBQ AREA

3 UPPER DECK





# RESORT STYLE POOL

3 UPPER  
DECK





# POOLSIDE BUNGALOWS

3 UPPER DECK



ARTIST CONCEPTUAL RENDERING. DEVELOPER MAY CHANGE WITHOUT NOTICE.



# SKYDECK & LOUNGE ADVANTAGES

*The Penthouse View Belongs to You  
360-Degree Views of Miami*

*Skydeck Lounge*



*Sundeck*



*Sunrise Pool*



*Tai Chi Deck*



*Rooftop Infinity Pool*





# LOUNGE

# 4 SKYDECK & LOUNGE





# SUNDECK

# 4 SKYDECK & LOUNGE



ARTIST CONCEPTUAL RENDERING. DEVELOPER MAY CHANGE WITHOUT NOTICE.



SUNRISE POOL

4 SKYDECK & LOUNGE



ARTIST CONCEPTUAL RENDERING. DEVELOPER MAY CHANGE WITHOUT NOTICE.



# INFINITY POOL

4 SKYDECK  
& LOUNGE





4

THE RESIDENCES







# BUILDING OVERVIEW

700 Feet

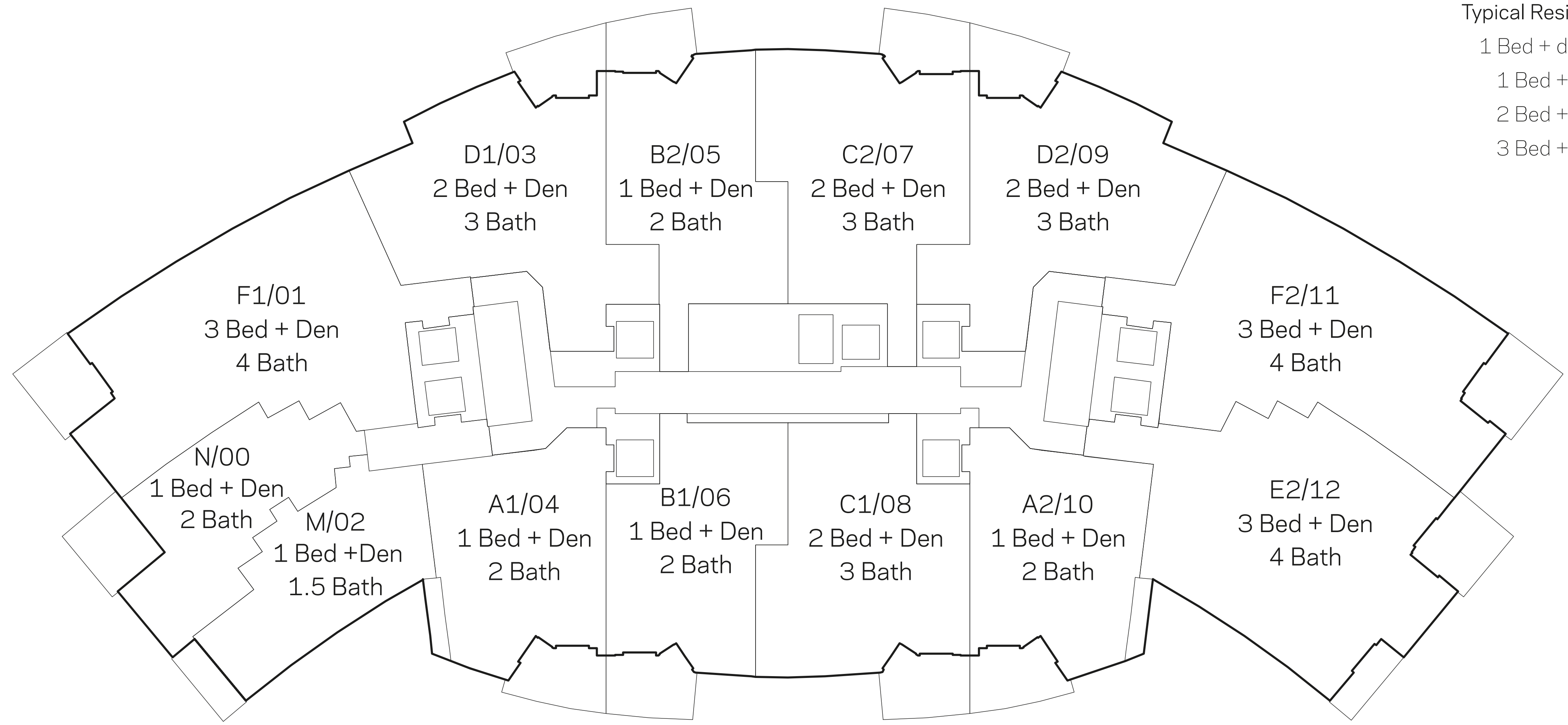
500+ Residences

Residences: Levels 8 - 54

Typical Floorplate | Level 8 - 45

Typical Residence Types

- 1 Bed + den | 1.5 Bath
- 1 Bed + den | 2 Bath
- 2 Bed + den | 3 Bath
- 3 Bed + den | 4 Bath





# RESIDENCE ADVANTAGES

*Full-Size Homes with 10-foot ceilings  
and Large Entertainment Spaces*

*Outdoor Living Rooms*



*Lock-Out Suites\**



*Convertible Dens*



*Private Elevators*



*Full-size Laundry Room*







# FEATURES

- Private Elevators
- 10-Foot Ceilings
- Outdoor Living Rooms
- Full-Size Laundry Room\*
- Convertible Den
- Lock-out studio\*

PARAMOUNT Residences Mobile App



ARTIST CONCEPTUAL RENDERING. DEVELOPER MAY CHANGE WITHOUT NOTICE.

*\* in select units*



# OUTDOOR LIVING ROOMS





# OPEN LIVING SPACES





# FLOOR-TO-CEILING GLASS





# INDOOR/OUTDOOR LIVING SPACES





# KITCHEN

3 Bedroom Residences  
Designer Kitchens

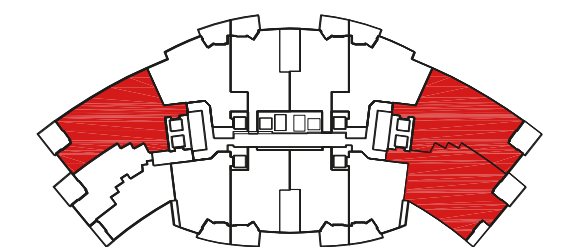


ARTIST CONCEPTUAL RENDERING. DEVELOPER MAY CHANGE WITHOUT NOTICE.

## BRANDS

OVEN, STOVE, FAN,  
DISHWASHER BOSCH

REFRIGERATOR SUB ZERO







# MASTER BATHROOM

3 Bedroom Residences  
Spa Tub, Rain Shower



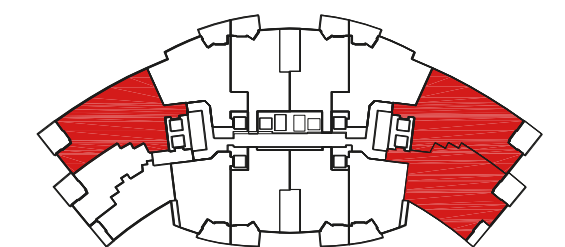
ARTIST CONCEPTUAL RENDERING. DEVELOPER MAY CHANGE WITHOUT NOTICE.

## BRANDS

SINK KOHLER

SHOWER HEAD &  
FAUCETS GROHE

TOILET & BATHTUB DURAVIT





# KITCHEN

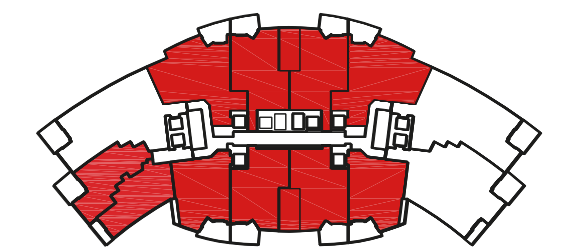
1 + 2 Bedroom Residences  
Designer Kitchen



## BRANDS

OVEN, STOVE, FAN,  
DISHWASHER BOSCH

REFRIGERATOR SUB ZERO





# MASTER BATHROOM

1 + 2 Bedroom Residences  
Spa Tub, Rain Shower



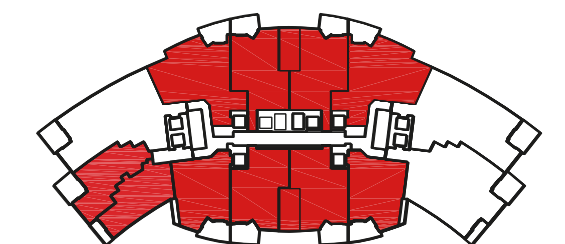
ARTIST CONCEPTUAL RENDERING. DEVELOPER MAY CHANGE WITHOUT NOTICE.

## BRANDS

SINK KOHLER

SHOWER HEAD &  
FAUCETS GROHE

TOILET & BATHTUB DURAVIT





5C

FLOORPLANS





# BUILDING OVERVIEW

700 Feet

500+ Residences

Residences: Levels 8 - 54

Typical Floorplate | Level 8 - 45

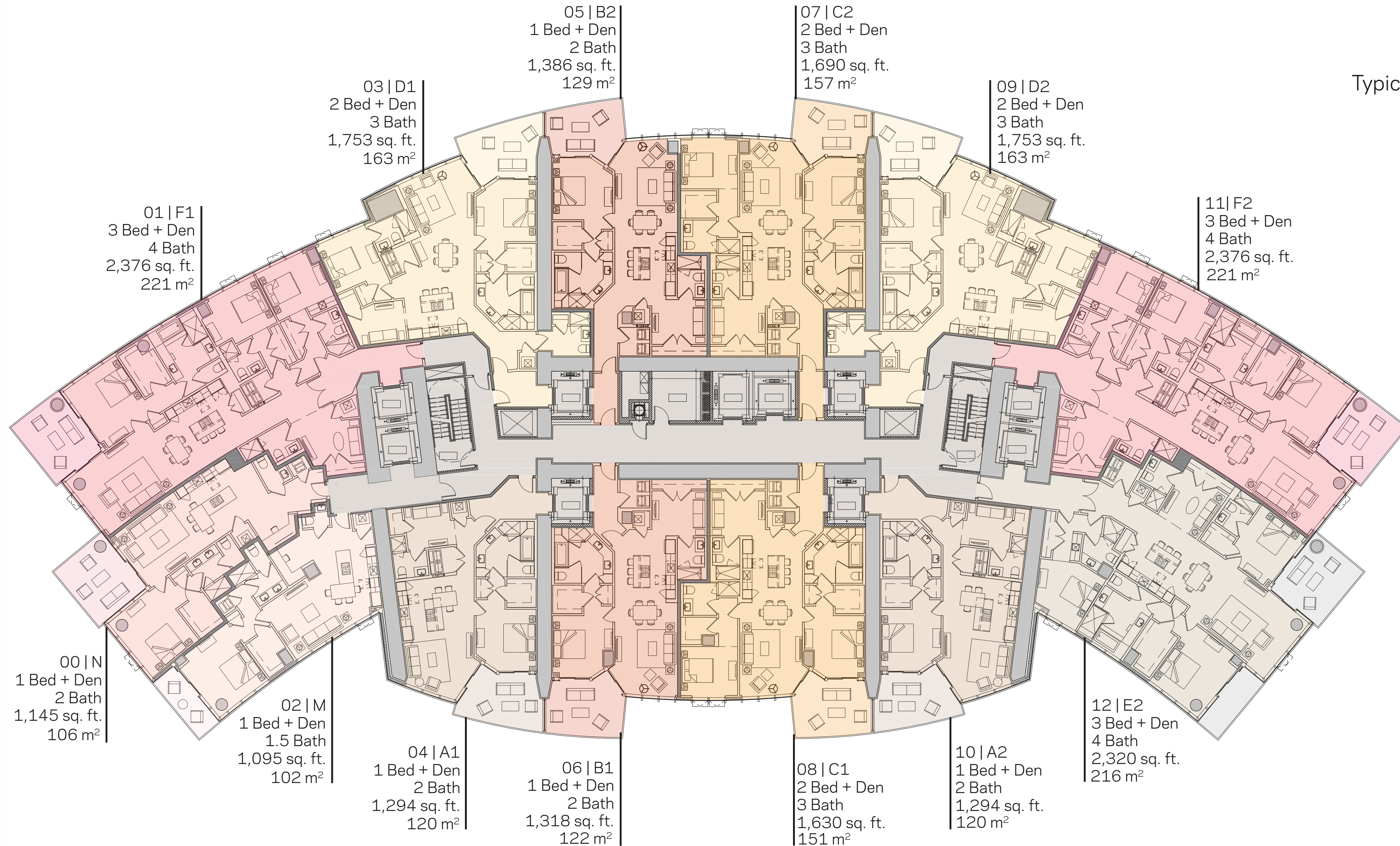
Typical Residence Types

1 Bed + den | 1.5 Bath

1 Bed + den | 2 Bath

2 Bed + den | 3 Bath

3 Bed + den | 4 Bath

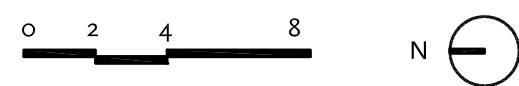
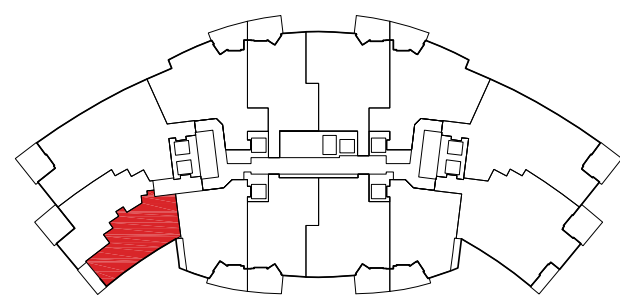




# 1 Bedroom + Den | 1.5 Bath

Total: 1,186 sq. ft. | 110 m<sup>2</sup>  
Interior: 1,095 sq. ft. | 102 m<sup>2</sup>  
Outdoor: 91 sq. ft. | 9 m<sup>2</sup>

RESIDENCE M | 02



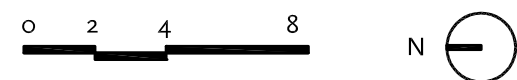
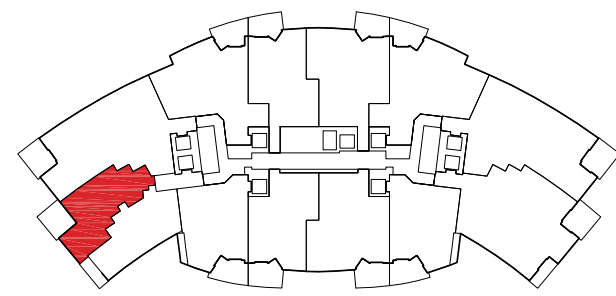
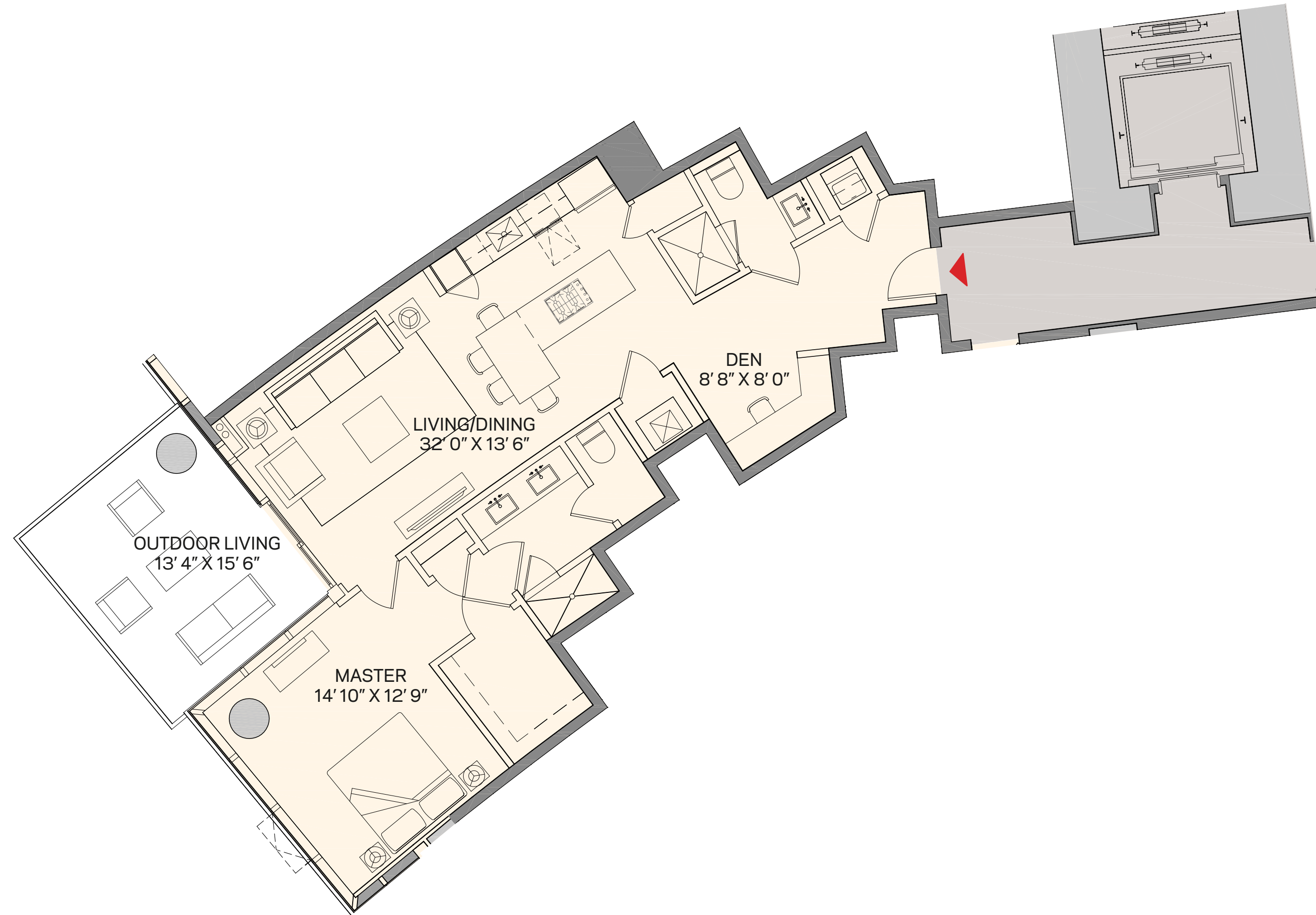
These drawings are conceptual only and are for the convenience of reference. They should not be relied upon as representations, express or implied, of the final detail of the residences. Units shown are examples of unit types and may not depict actual units. Stated square footages are ranges for a particular unit type and are measured to the exterior boundaries of the exterior walls and the centerline of interior demising walls and in fact vary from the area that would be determined by using the description and definition of the "Unit" set forth in the Declaration (which generally only includes the interior airspace between the perimeter walls and excludes interior structural components).



# 1 Bedroom + Den | 2 Bath

Total: 1,346 sq. ft. | 125 m<sup>2</sup>  
Interior: 1,145 sq. ft. | 106 m<sup>2</sup>  
Outdoor: 201 sq. ft. | 19 m<sup>2</sup>

RESIDENCE N | 00



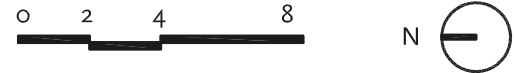
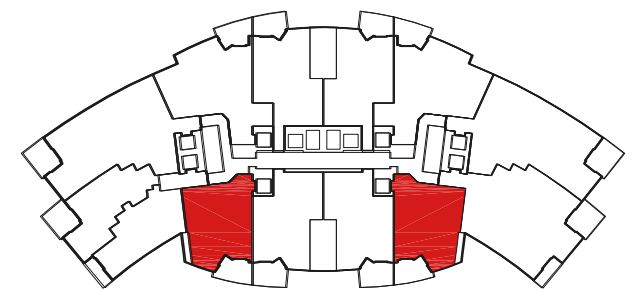
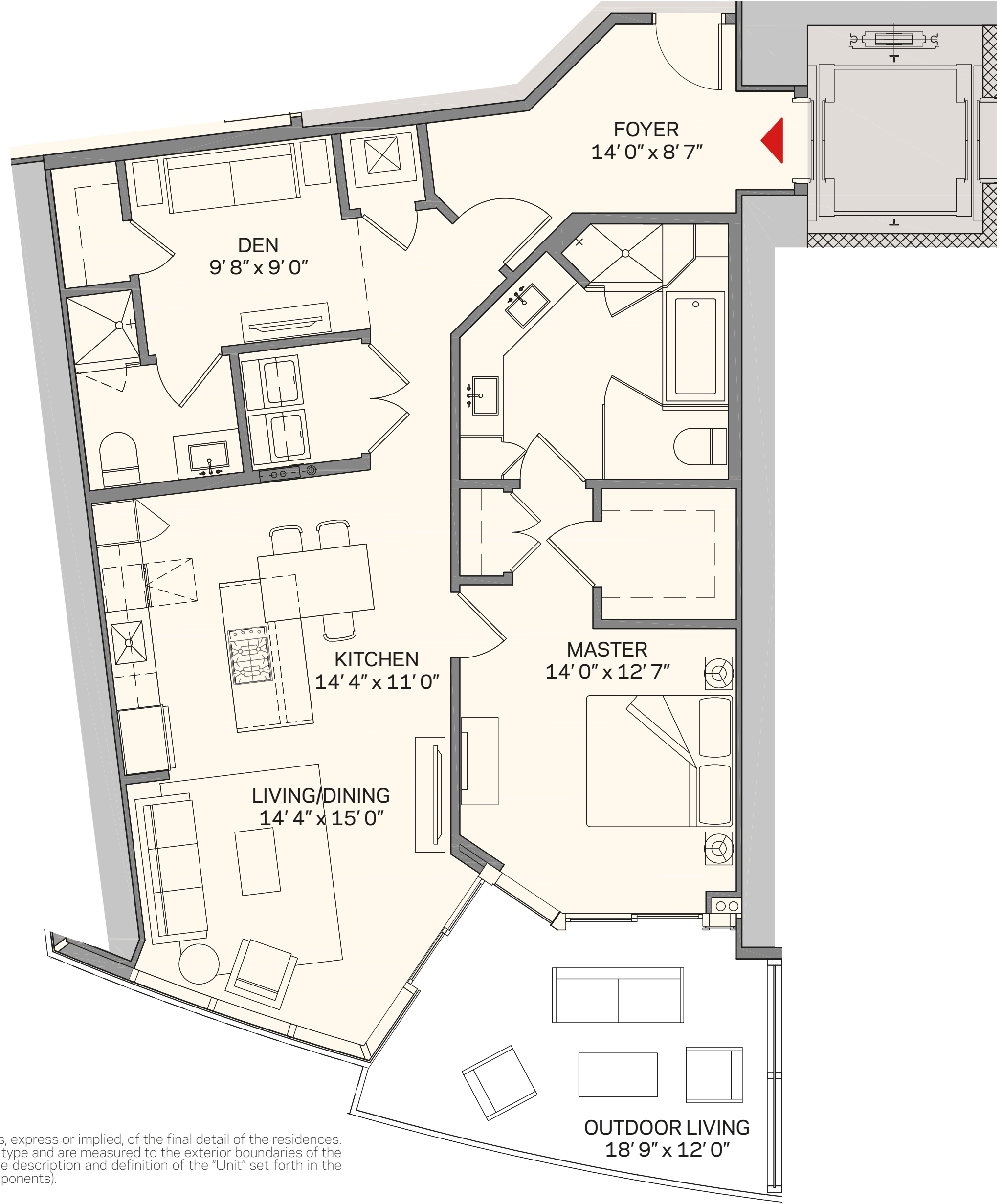
These drawings are conceptual only and are for the convenience of reference. They should not be relied upon as representations, express or implied, of the final detail of the residences. Units shown are examples of unit types and may not depict actual units. Stated square footages are ranges for a particular unit type and are measured to the exterior boundaries of the exterior walls and the centerline of interior demising walls and in fact vary from the area that would be determined by using the description and definition of the "Unit" set forth in the Declaration (which generally only includes the interior airspace between the perimeter walls and excludes interior structural components).



# 1 Bedroom + Den | 2 Bath

Total: 1,491 sq. ft. | 138 m<sup>2</sup>  
 Interior: 1,294 sq. ft. | 120 m<sup>2</sup>  
 Outdoor: 197 sq. ft. | 18 m<sup>2</sup>

RESIDENCE A1 | 04  
*Reverse: Residence A2 | 10*



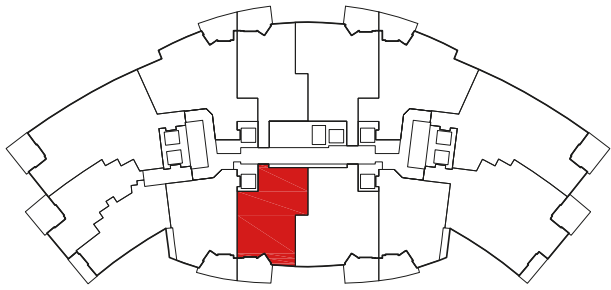
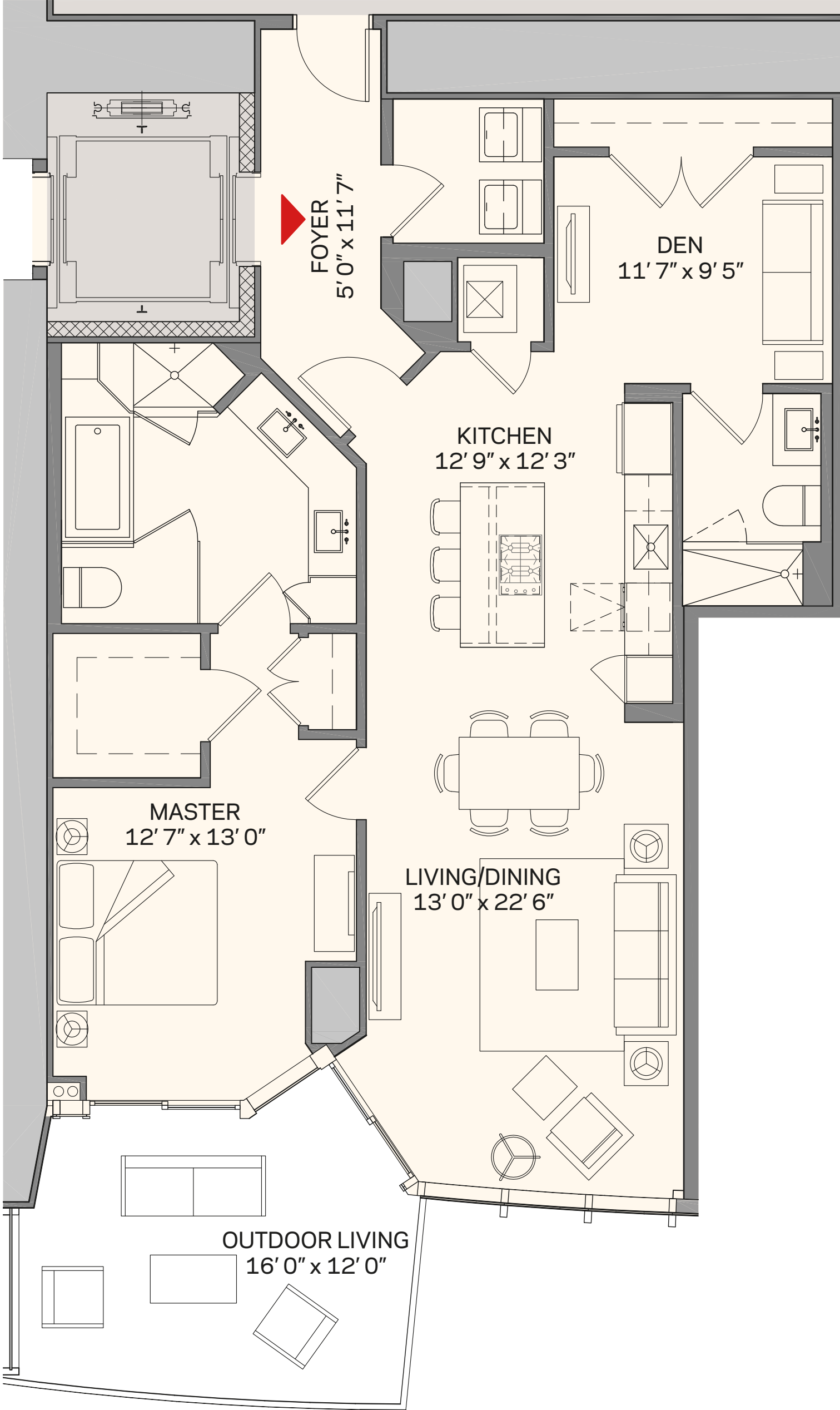
These drawings are conceptual only and are for the convenience of reference. They should not be relied upon as representations, express or implied, of the final detail of the residences. Units shown are examples of unit types and may not depict actual units. Stated square footages are ranges for a particular unit type and are measured to the exterior boundaries of the exterior walls and the centerline of interior demising walls and in fact vary from the area that would be determined by using the description and definition of the "Unit" set forth in the Declaration (which generally only includes the interior airspace between the perimeter walls and excludes interior structural components).



# 1 Bedroom + Den | 2 Bath

Total: 1,521 sq. ft. | 141 m<sup>2</sup>  
 Interior: 1,318 sq. ft. | 122 m<sup>2</sup>  
 Outdoor: 205 sq. ft. | 19 m<sup>2</sup>

RESIDENCE B1 | 06



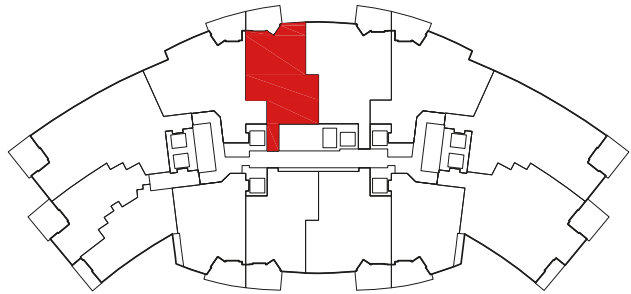
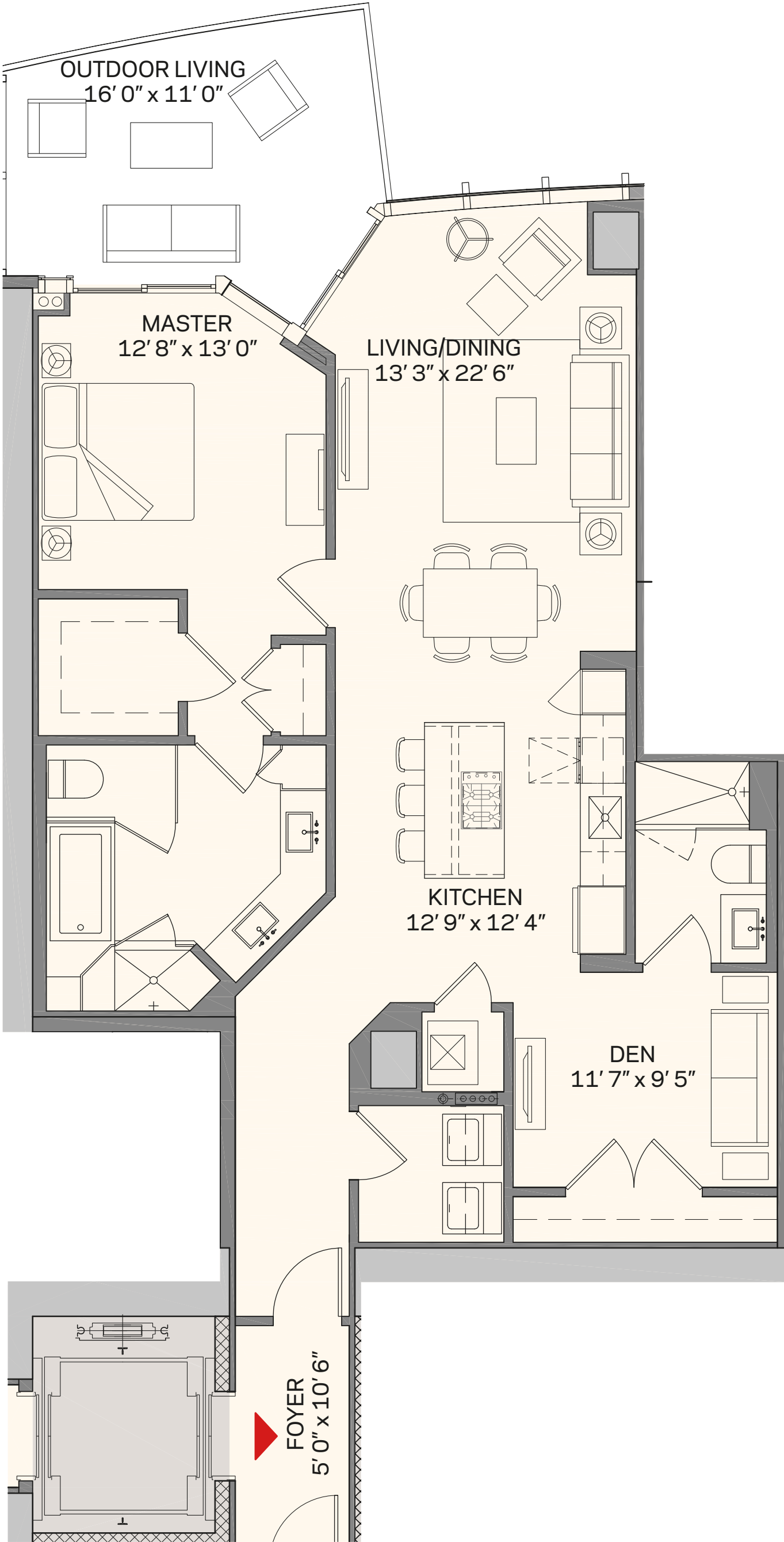
These drawings are conceptual only and are for the convenience of reference. They should not be relied upon as representations, express or implied, of the final detail of the residences. Units shown are examples of unit types and may not depict actual units. Stated square footages are ranges for a particular unit type and are measured to the exterior boundaries of the exterior walls and the centerline of interior demising walls and in fact vary from the area that would be determined by using the description and definition of the "Unit" set forth in the Declaration (which generally only includes the interior airspace between the perimeter walls and excludes interior structural components).



# 1 Bedroom + Den | 2 Bath

Total: 1,573 sq. ft. | 146 m<sup>2</sup>  
 Interior: 1,386 sq. ft. | 129 m<sup>2</sup>  
 Outdoor: 187 sq. ft. | 17 m<sup>2</sup>

RESIDENCE B2 | 05



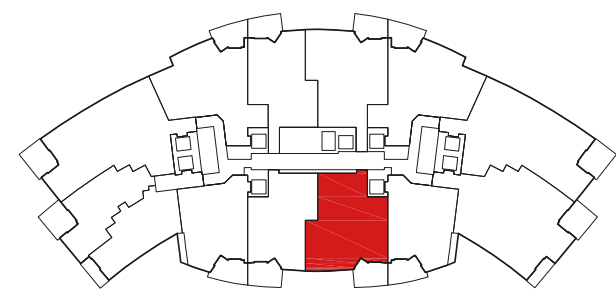
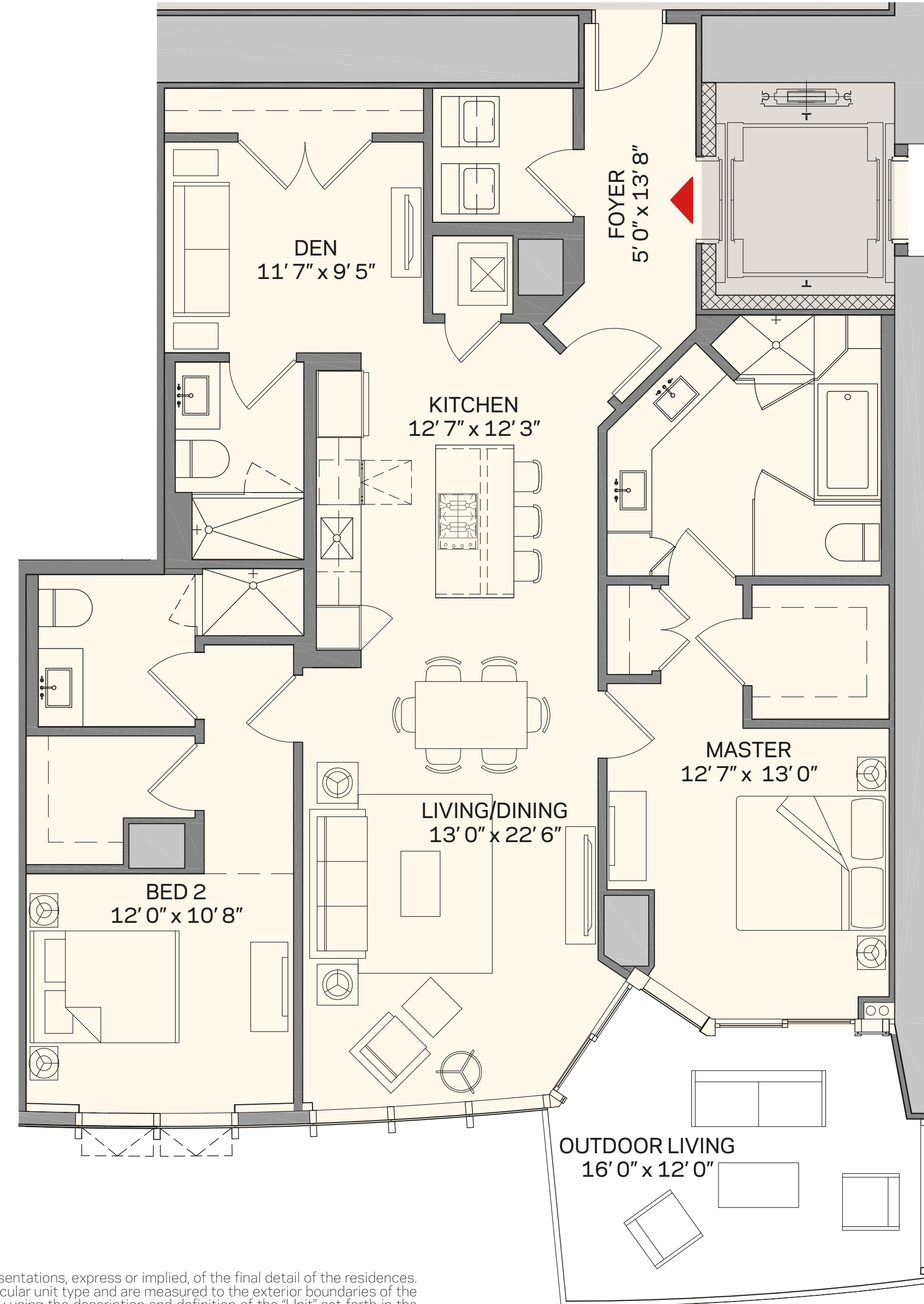
These drawings are conceptual only and are for the convenience of reference. They should not be relied upon as representations, express or implied, of the final detail of the residences. Units shown are examples of unit types and may not depict actual units. Stated square footages are ranges for a particular unit type and are measured to the exterior boundaries of the exterior walls and the centerline of interior demising walls and in fact vary from the area that would be determined by using the description and definition of the "Unit" set forth in the Declaration (which generally only includes the interior airspace between the perimeter walls and excludes interior structural components).



# 2 Bedroom + Den | 3 Bath

Total: 1,835 sq. ft. | 170 m<sup>2</sup>  
Interior: 1,630 sq. ft. | 151 m<sup>2</sup>  
Outdoor: 205 sq. ft. | 19 m<sup>2</sup>

RESIDENCE C1 | 08



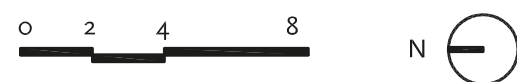
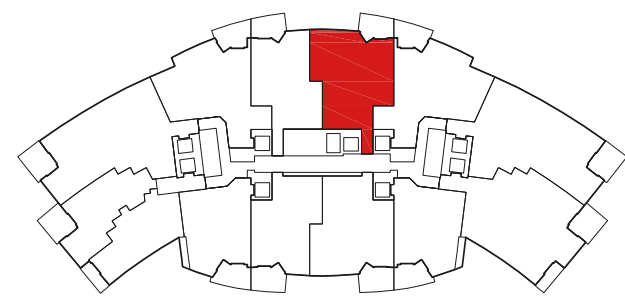
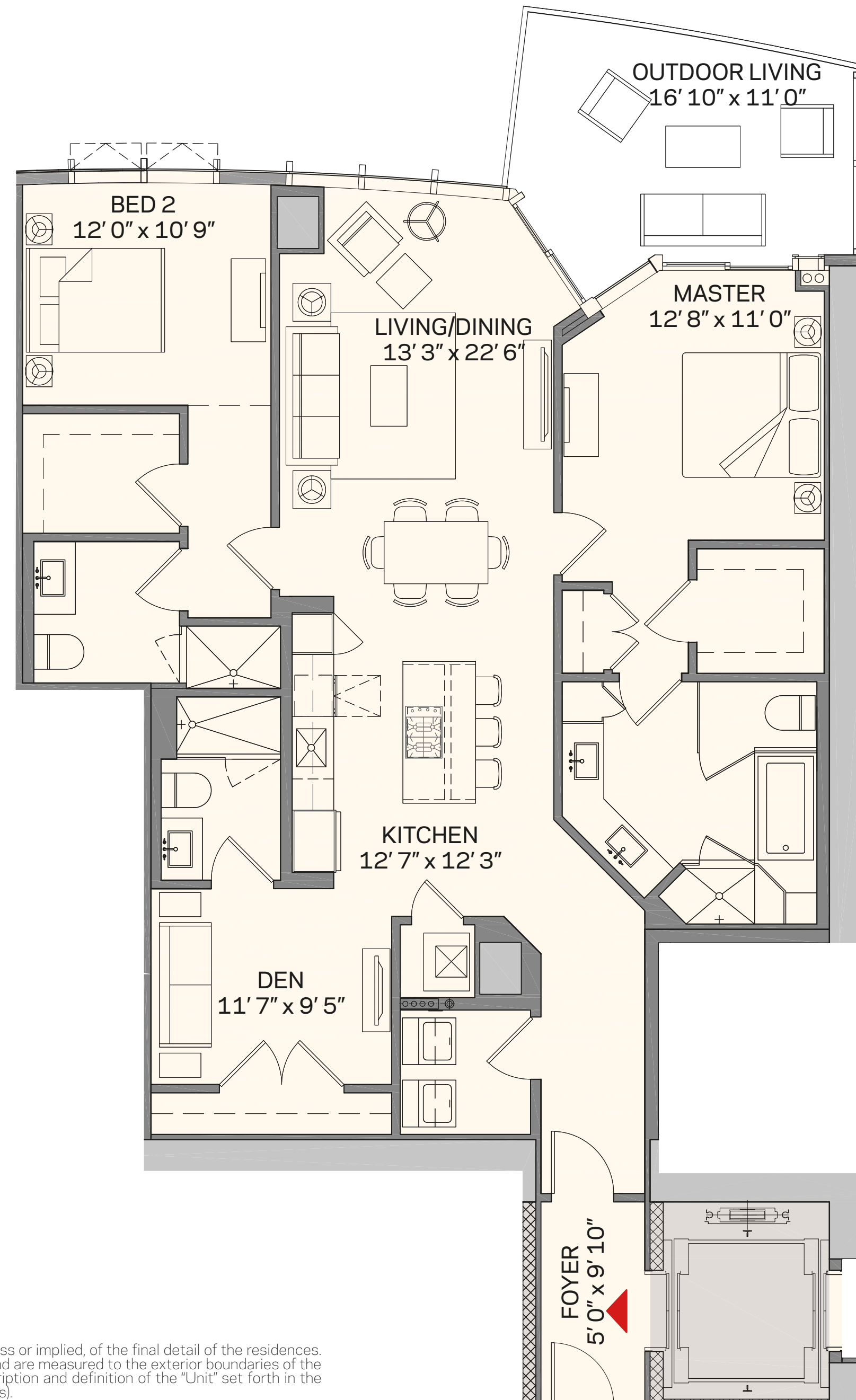
These drawings are conceptual only and are for the convenience of reference. They should not be relied upon as representations, express or implied, of the final detail of the residences. Units shown are examples of unit types and may not depict actual units. Stated square footages are ranges for a particular unit type and are measured to the exterior boundaries of the exterior walls and the centerline of interior demising walls and in fact vary from the area that would be determined by using the description and definition of the "Unit" set forth in the Declaration (which generally only includes the interior airspace between the perimeter walls and excludes interior structural components).



# 2 Bedroom + Den | 3 Bath

Total: 1,877 sq. ft. | 174 m<sup>2</sup>  
Interior: 1,690 sq. ft. | 157 m<sup>2</sup>  
Outdoor: 187 sq. ft. | 17 m<sup>2</sup>

# RESIDENCE C2 | 07



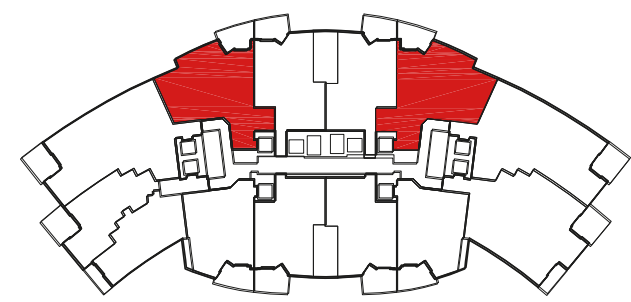
These drawings are conceptual only and are for the convenience of reference. They should not be relied upon as representations, express or implied, of the final detail of the residences. Units shown are examples of unit types and may not depict actual units. Stated square footages are ranges for a particular unit type and are measured to the exterior boundaries of the exterior walls and the centerline of interior demising walls and in fact vary from the area that would be determined by using the description and definition of the "Unit" set forth in the Declaration (which generally only includes the interior airspace between the perimeter walls and excludes interior structural components).



# 2 Bedroom + Den | 3 Bath

Total: 1,952 sq. ft. | 181 m<sup>2</sup>  
Interior: 1,753 sq. ft. | 163 m<sup>2</sup>  
Outdoor: 199 sq. ft. | 18 m<sup>2</sup>

RESIDENCE D1 | 03  
*Reverse: Residence D2 | 09*



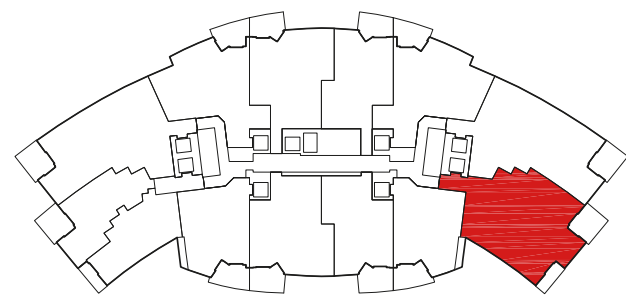
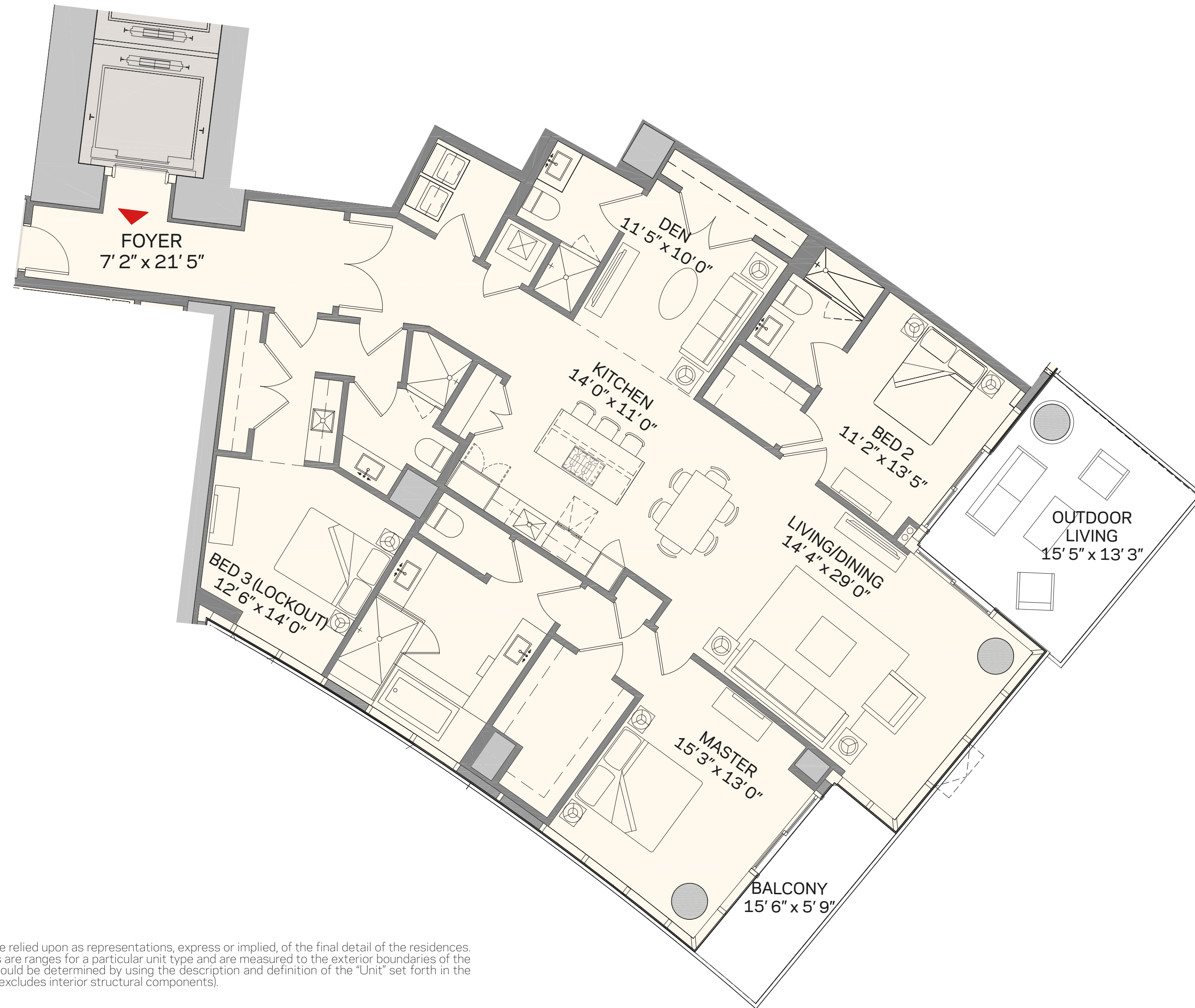
These drawings are conceptual only and are for the convenience of reference. They should not be relied upon as representations, express or implied, of the final detail of the residences. Units shown are examples of unit types and may not depict actual units. Stated square footages are ranges for a particular unit type and are measured to the exterior boundaries of the exterior walls and the centerline of interior demising walls and in fact vary from the area that would be determined by using the description and definition of the "Unit" set forth in the Declaration (which generally only includes the interior airspace between the perimeter walls and excludes interior structural components).



# 3 Bedroom + Den | 4 Bath

Total: 2,611 sq. ft. | 243 m<sup>2</sup>  
 Interior: 2,320 sq. ft. | 216 m<sup>2</sup>  
 Outdoor: 291 sq. ft. | 27 m<sup>2</sup>

# RESIDENCE E2 | 12



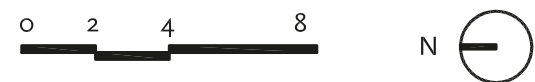
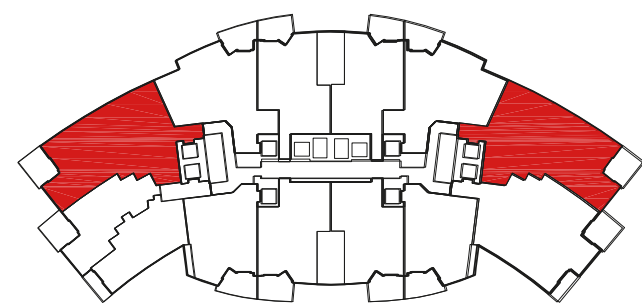
These drawings are conceptual only and are for the convenience of reference. They should not be relied upon as representations, express or implied, of the final detail of the residences. Units shown are examples of unit types and may not depict actual units. Stated square footages are ranges for a particular unit type and are measured to the exterior boundaries of the exterior walls and the centerline of interior demising walls and in fact vary from the area that would be determined by using the description and definition of the "Unit" set forth in the Declaration (which generally only includes the interior airspace between the perimeter walls and excludes interior structural components).



# 3 Bedroom + Den | 4 Bath

Total: 2,578 sq. ft. | 240 m<sup>2</sup>  
Interior: 2,376 sq. ft. | 221 m<sup>2</sup>  
Outdoor: 202 sq. ft. | 19 m<sup>2</sup>

RESIDENCE F1 | 01  
*Reverse: Residence F2 | 11*



These drawings are conceptual only and are for the convenience of reference. They should not be relied upon as representations, express or implied, of the final detail of the residences. Units shown are examples of unit types and may not depict actual units. Stated square footages are ranges for a particular unit type and are measured to the exterior boundaries of the exterior walls and the centerline of interior demising walls and in fact vary from the area that would be determined by using the description and definition of the "Unit" set forth in the Declaration (which generally only includes the interior airspace between the perimeter walls and excludes interior structural components).



6

PARAMOUNT  
BRAND

*design*  
*service*  
*technology*  
*experience*





# *immersion*

*DESIGN*

architecture  
floorplans  
kitchens & baths  
sense of arrival  
amenities

*SERVICE*

global concierge  
courteous doormen  
on premise repairs  
attaché for any need

*TECHNOLOGY*

one-touch attaché  
smart tech buildings  
smart thermostats  
smart smoke detection  
uv reduction glass  
high speed elevators  
remote home controls

*EXPERIENCE*

exceptional spas  
signature restaurants  
private member lounges  
jam rooms and recording studios  
exceptional locations



PARAMOUNT is the only residential brand of its kind. With brand pillars in the areas of design, service, technology and experience, our customers can expect a commitment to their purchase satisfaction, enhanced resale value and of course, the ultimate lifestyle, a standard of any PARAMOUNT home.



*World-class architecture and interior design teams delivering the highest level of residential experience, maximized views, striking building exteriors and superior amenities.*

# *design*

What unites PARAMOUNT Residences is the attention to detail used in their making - how every element, interior space and amenity is carefully considered to create a truly uncompromising expression of modern luxury.

*Highly experienced development team*

*Locations within the world's most desired destinations*

# *for you.*



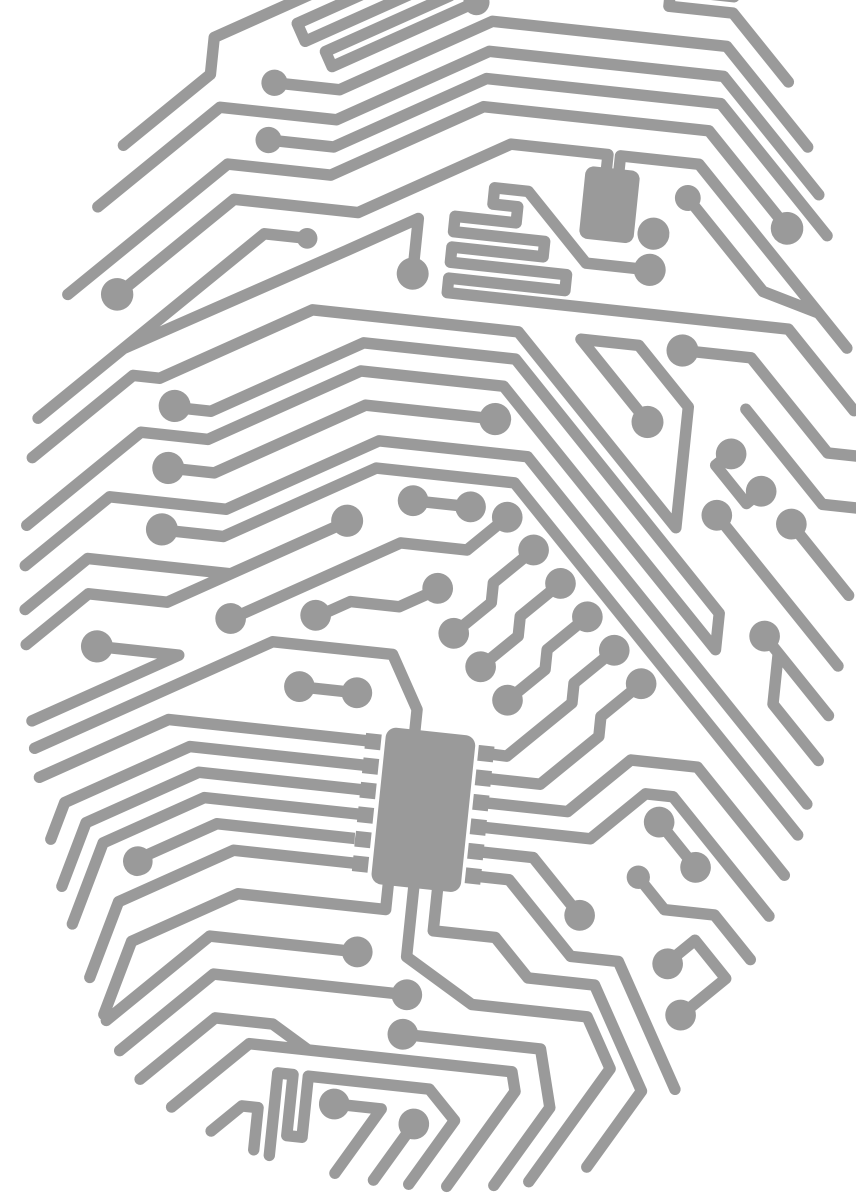


# *service*

In a world that's ever crowded and impersonal, PARAMOUNT Residences are proof that a place on earth still exists where you can experience the genuine warmth of the human touch while avoiding the standardization that has become common place in most residential towers.

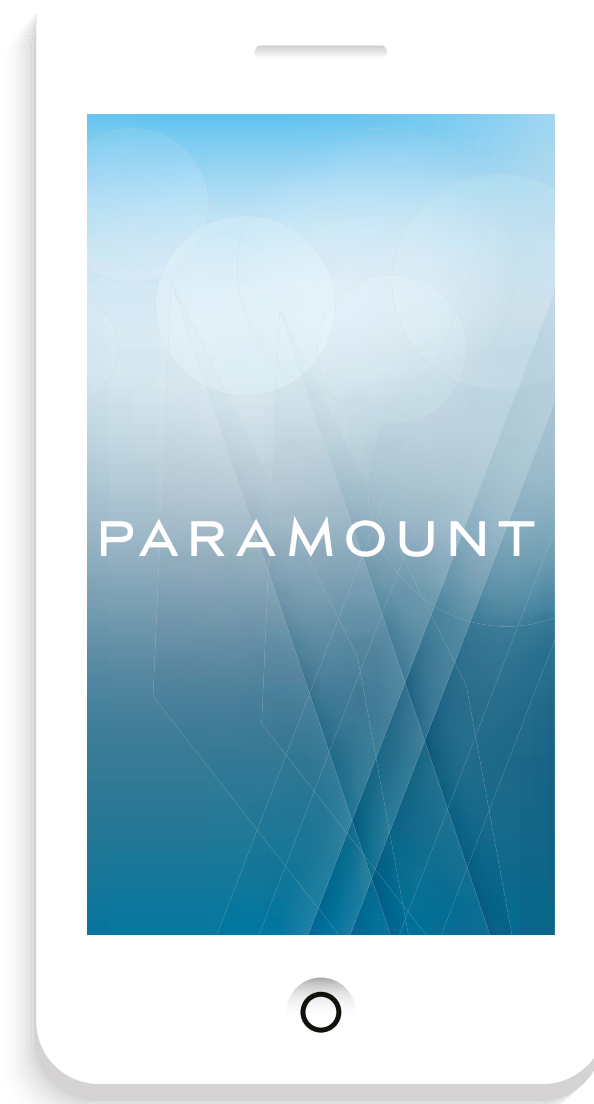






# *technology*

Intuitive service becomes even more effortless through integrated smart building technology and a proprietary PARAMOUNT Residences smartphone application. Now you can instantly connect with your concierge, attaché and nearly any desire in the world.



- Sonance Visual Performance Speakers
- Bitwise - iPad Control
- Apple - Airport Extreme Wireless Networking Router
- Episode® 2 Channel Mini-Amplifier with Surface Mount IR Sensor and Remote Control
- Seura Hydra In-Wall Kitchen HDTV 27"
- Nest Smart Thermostat
- Sonos Connect - Music Streaming
- AppleTV

*SMART Thermostat by NEST*





# experience

Not only “the” place to live, PARAMOUNT is also the place to find the pulse of any city. Between exceptional amenities and curated events, signature restaurants and private lounges you can discover a “city within a city” concept that brings life and energy into every one of our buildings.



## ONE-TOUCH ACCESS TO:

- house cleaning
- International and domestic moving coordination
- custom furniture packages and interior design
- audio visual and security installation
- professional home organization
- household staffing
- gourmet chef coordination
- tickets to any show
- town car to the airport
- reservations at any hot spot
- VIP consideration at most destinations
- fresh flower delivery
- bar and pantry curation
- personal training
- spa and beauty appointments
- dry cleaning
- pet care
- child care
- fine dining deliveries
- amenity reservations
- advance shipping of luggage
- resident's necessities
- weekly entertainment ideas
- and basically anything you desire*







TEAM



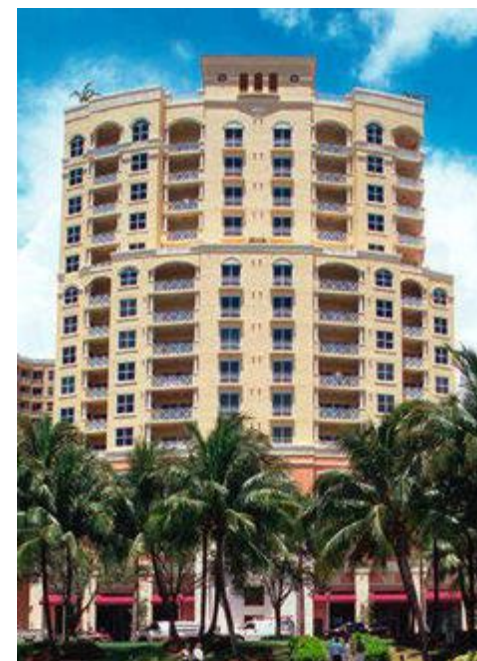


# DEVELOPMENT TEAM

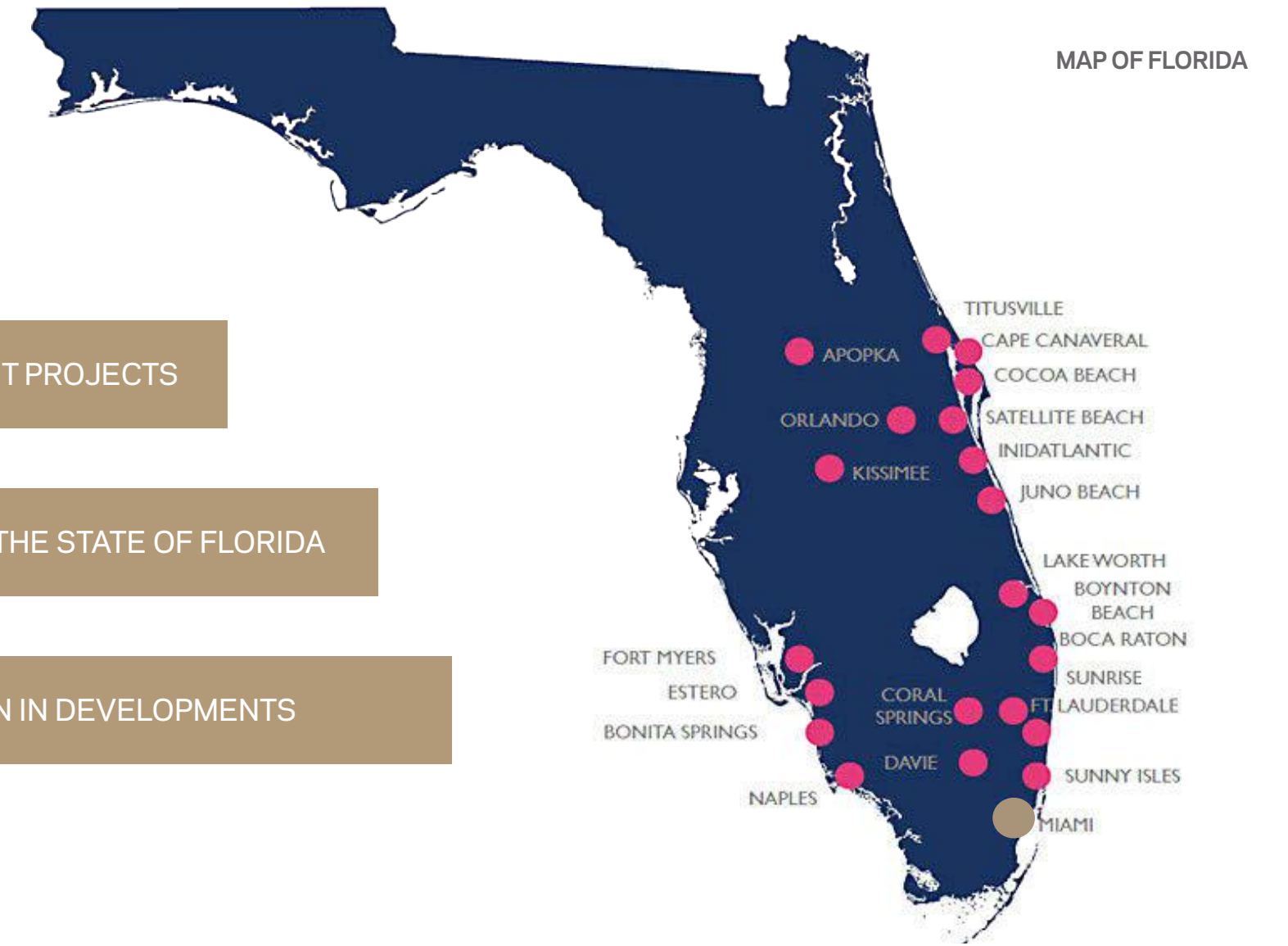
*Daniel Kodsi*  
PARAMOUNT VENTURES

Daniel Kodsi is a real estate industry veteran with more than 25 years of experience developing a diversified portfolio of mixed-use, multi-family, condominium and planned single-family developments. With \$1.2B in completed project and nearly an additional \$1B in current developments he continues to build an extensive development track record.

From award winning master-planned communities around the state, to the luxurious PARAMOUNT Bay high-rise in Miami's Edgewater neighborhood, as CEO of Royal Palm Companies Mr. Kodsi has built 25 separate development projects generating over 3,000 units throughout the state of Florida. Currently Mr. Kodsi is working on several major projects set to deliver an additional 1,000 units.



*confidence*  
*experience*  
*delivery of excellence*



44 SEPARATE DEVELOPMENT PROJECTS

OVER 4,000 UNITS IN THE STATE OF FLORIDA

\$2 BILLION IN DEVELOPMENTS

*Art Falcone*  
MIAMI WORLD CENTER ASSOCIATES

Art Falcone has over 35 years of executive experience and a proven track record of success. Mr. Falcone brings tested leadership, an entrepreneurial spirit and unparalleled expertise in all areas of real estate. He has diverse and extensive experience in the management of purchasing, financing, and developing residential and commercial real estate product types.

*Nitin Motwani*  
MIAMI WORLD CENTER ASSOCIATES

In his role as Managing Principal, Mr. Motwani is responsible for every facet of the project including but not limited to land acquisition, zoning and entitlements, financing (public and private), joint ventures and development. Mr. Motwani has earned a Bachelors degree in International Relations from Duke University and holds a Master of Science in Real Estate Development from Columbia University.



# DESIGN TEAM

## *Elkus | Manfredi* ARCHITECTURE

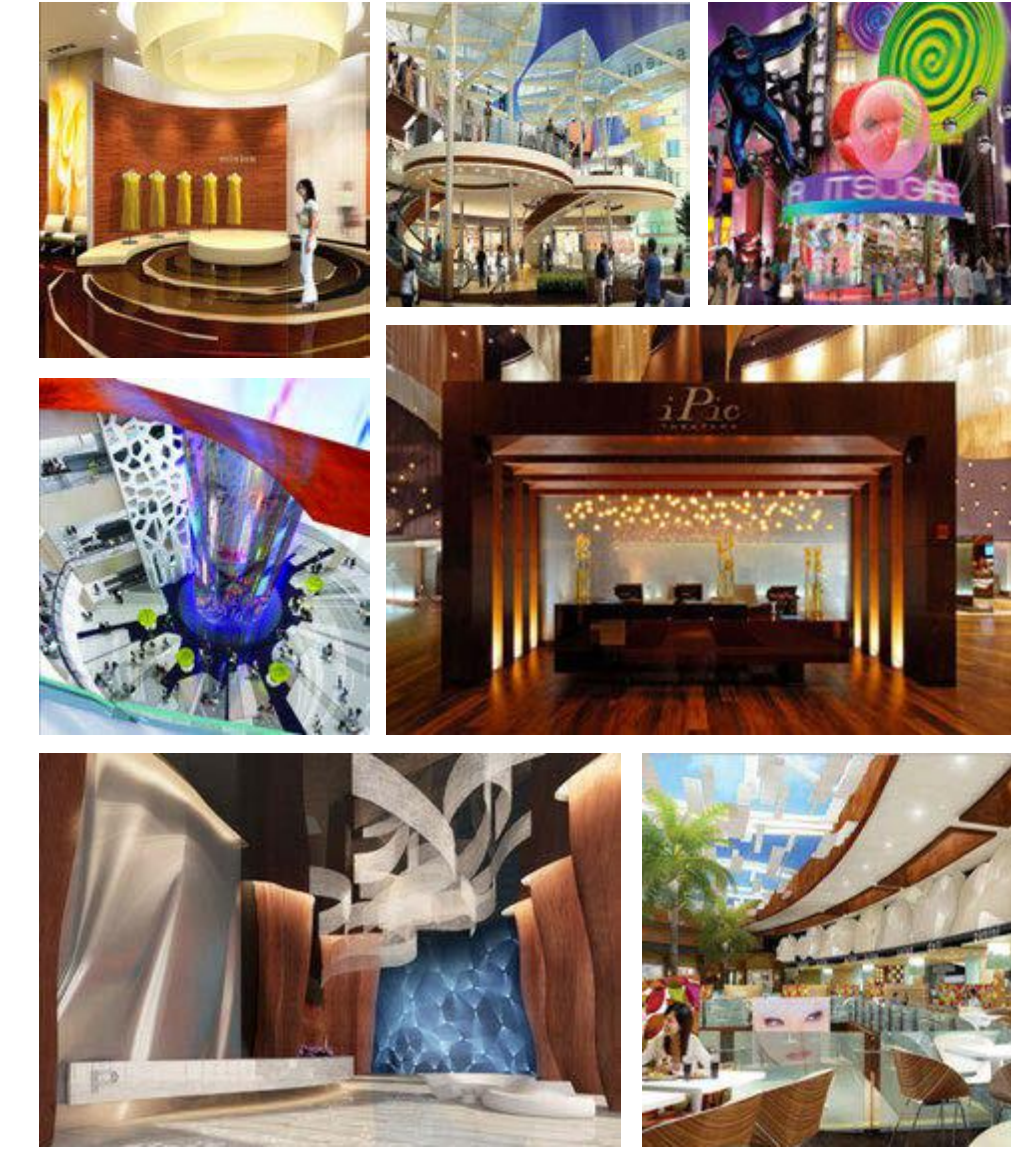
Since the founding of Elkus Manfredi Architects in 1988, they have been privileged to form long-term relationships with many of the nation's most distinguished developers, corporations, and institutions, who have given them the opportunity to shape some of the most important planning and design projects undertaken across the country. Their collective wealth of design and planning experience, built across a rich diversity of project and building types, energizes all of their work. They are well-versed in the ways that connectivity, location, market pressures, sustainability, and other elements play into the unique matrix that each project represents.

- City Place
- Time Warner
- The Grove
- The Shops at Columbus Circle
- The Peninsula
- The Galleria at Sowwah Square



## *IDDI* INTERIOR DESIGN

ID & Design International is a full service design and branding firm with extensive knowledge specializing in commercial, mixed-use, retail, hospitality and entertainment projects. With vast international experience and exposure to some of the world's leading retailers, developers and investors, our team-based approach leads with a logical business and consumer focus to all strategic design solutions and transforms them into uniquely branded environments. Today, IDDI offers, President and Creative Director, Sherif Ayad's extensive experience, coupled with a diversified team of some of the most creative minds in environmental design.







# PARAMOUNT

MIAMI WORLDCENTER



ORAL REPRESENTATIONS CANNOT BE RELIED UPON AS CORRECTLY STATING THE REPRESENTATIONS OF THE DEVELOPER. FOR CORRECT REPRESENTATIONS, MAKE REFERENCE TO THIS BROCHURE AND TO THE DOCUMENTS REQUIRED BY SECTION 718.503, FLORIDA STATUTES, TO BE FURNISHED BY A DEVELOPER TO A BUYER OR LESSEE.

This is not intended to be an offer to sell, or solicitation to buy, condominium units to residents of any jurisdiction where prohibited by law, and your eligibility for purchase will depend upon your state of residency. This offering is made only by the prospectus for the condominium and no statement should be relied upon if not made in the prospectus. The sketches, renderings, graphic materials, plans, specifications, terms, conditions and statements contained in this brochure are proposed only, and the Developer reserves the right to modify, revise or withdraw any or all of same in its sole discretion and without prior notice. All improvements, designs and construction are subject to first obtaining the appropriate federal, state and local permits and approvals for same. These drawings and depictions are conceptual only and are for the convenience of reference and including artists renderings. They should not be relied upon as representations, express or implied, of the final detail of the residences or the Condominium. The developer expressly reserves the right to make modifications, revisions, and changes it deems desirable in its sole and absolute discretion. All depictions of appliances, counters, soffits, floor coverings and other matters of detail, including, without limitation, items of finish and decoration, are conceptual only and are not necessarily included in each Unit. The photographs contained in this brochure may be stock photography or have been taken off-site and are used to depict the spirit of the lifestyles to be achieved rather than any that may exist or that may be proposed, and are merely intended as illustrations of the activities and concepts depicted therein. Consult your Agreement and the Prospectus for the items included with the Unit. Dimensions and square footage are approximate and may vary with actual construction. The project graphics, renderings and text provided herein are copyrighted works owned by the developer. All rights reserved. Unauthorized reproduction, display or other dissemination of such materials is strictly prohibited and constitutes copyright infringement. No real estate broker is authorized to make any representations or other statements regarding the projects, and no agreements with, deposits paid to or other arrangements made with any real estate broker are or shall be binding on the developer. All prices are subject to change at any time and without notice, and do not include optional features or premiums for upgraded units. From time to time, price changes may have occurred that are not yet reflected on this brochure. Please check with the sales center for the most current pricing.