

PARAMOUNT

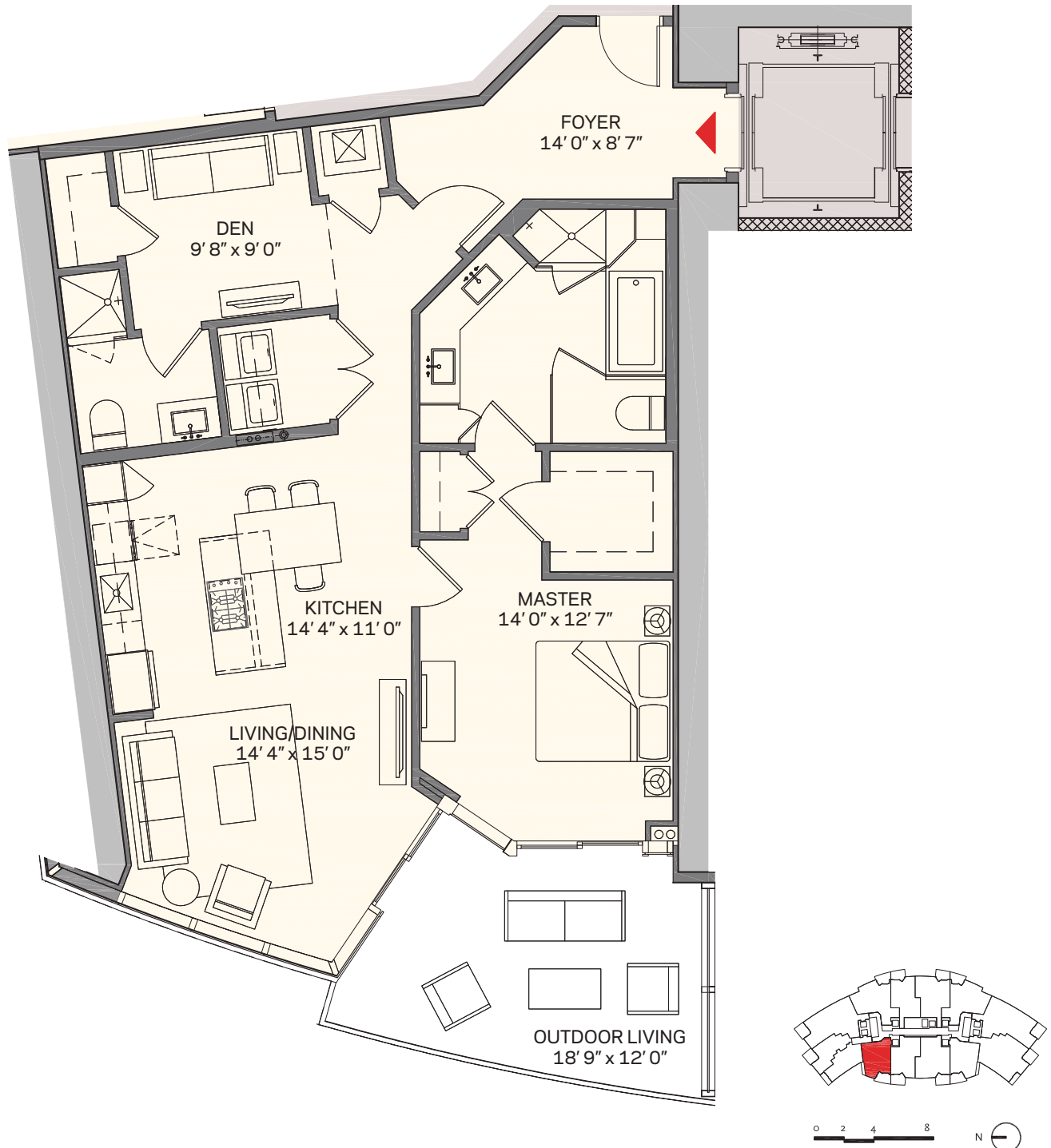
MIAMI WORLDCENTER



RESIDÊNCIA A1 | 04

1 Quartos + Den | 2 Banheiros

Interior:	1.294 sq. ft.	120 m ²
Varanda:	197 sq. ft.	18 m ²
Total:	1.491 sq. ft.	138 m ²



These drawings are conceptual only and are for the convenience of reference. They should not be relied upon as representations, express or implied, of the final detail of the RESIDÊNCIAS. Units shown are examples of unit types and may not depict actual units. Stated square footages are ranges for a particular unit type and are measured to the exterior boundaries of the exterior walls and the centerline of interior demising walls and in fact vary from the area that would be determined by using the description and definition of the "Unit" set forth in the Declaration (which generally only includes the interior airspace between the perimeter walls and excludes interior structural components).

PARAMOUNT

MIAMI WORLDCENTER



RESIDÊNCIA A2 | 10

1 Quartos + Den | 2 Banheiros

Interior:	1.294 sq. ft.	120 m ²
Varanda:	197 sq. ft.	18 m ²
Total:	1.491 sq. ft.	138 m ²



These drawings are conceptual only and are for the convenience of reference. They should not be relied upon as representations, express or implied, of the final detail of the RESIDÊNCIAS. Units shown are examples of unit types and may not depict actual units. Stated square footages are ranges for a particular unit type and are measured to the exterior boundaries of the exterior walls and the centerline of interior demising walls and in fact vary from the area that would be determined by using the description and definition of the "Unit" set forth in the Declaration (which generally only includes the interior airspace between the perimeter walls and excludes interior structural components).

PARAMOUNT

MIAMI WORLDCENTER



RESIDÊNCIA B1 | 06

1 Quartos + Den | 2 Banheiros

Total:	1,521 sq. ft.	141 m ²
Interior:	1,318 sq. ft.	122 m ²
Outdoor:	205 sq. ft.	19 m ²



These drawings are conceptual only and are for the convenience of reference. They should not be relied upon as representations, express or implied, of the final detail of the residences. Units shown are examples of unit types and may not depict actual units. Stated square footages are ranges for a particular unit type and are measured to the exterior boundaries of the exterior walls and the centerline of interior demising walls and in fact vary from the area that would be determined by using the description and definition of the "Unit" set forth in the Declaration (which generally only includes the interior airspace between the perimeter walls and excludes interior structural components). Note that measurements of rooms set forth on this floor plan are generally taken at the greatest points of each given room (as if the room were a perfect rectangle), without regard for any cutouts. Accordingly, the area of the actual room will typically be smaller than the product obtained by multiplying the stated length times width. All dimensions are approximate and may vary with actual construction, and all floor plans and development plans are subject to change.

PARAMOUNT

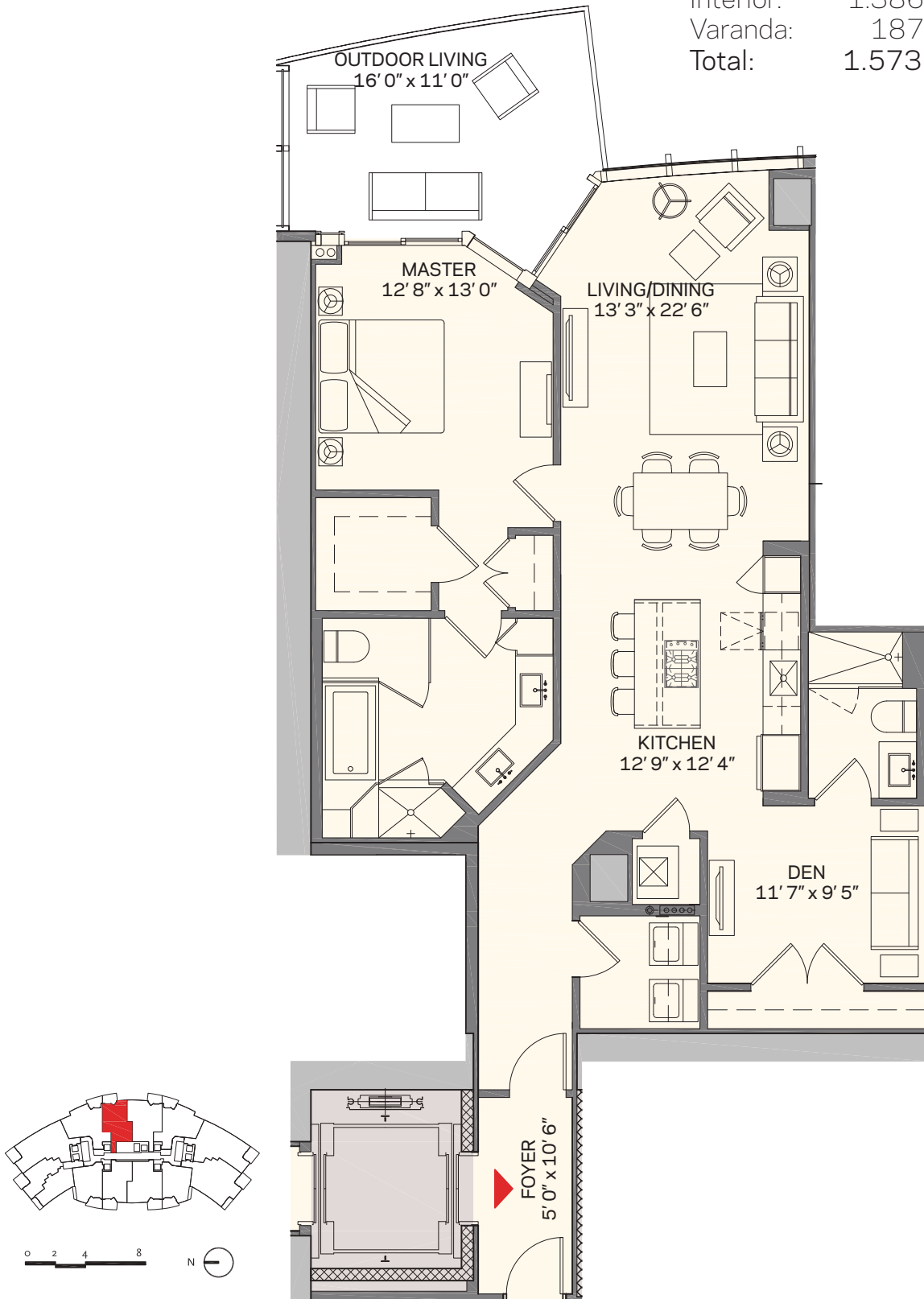
MIAMI WORLDCENTER



RESIDÊNCIA B2 | 05

1 Quartos + Den | 2 Banheiros

Interior:	1.386 sq. ft.	129 m ²
Varanda:	187 sq. ft.	17 m ²
Total:	1.573 sq. ft.	146 m ²



These drawings are conceptual only and are for the convenience of reference. They should not be relied upon as representations, express or implied, of the final detail of the RESIDÊNCIAS. Units shown are examples of unit types and may not depict actual units. Stated square footages are ranges for a particular unit type and are measured to the exterior boundaries of the exterior walls and the centerline of interior demising walls and in fact vary from the area that would be determined by using the description and definition of the "Unit" set forth in the Declaration (which generally only includes the interior airspace between the perimeter walls and excludes interior structural components).

PARAMOUNT

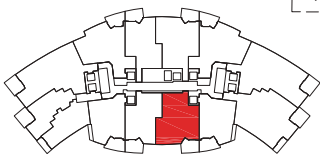
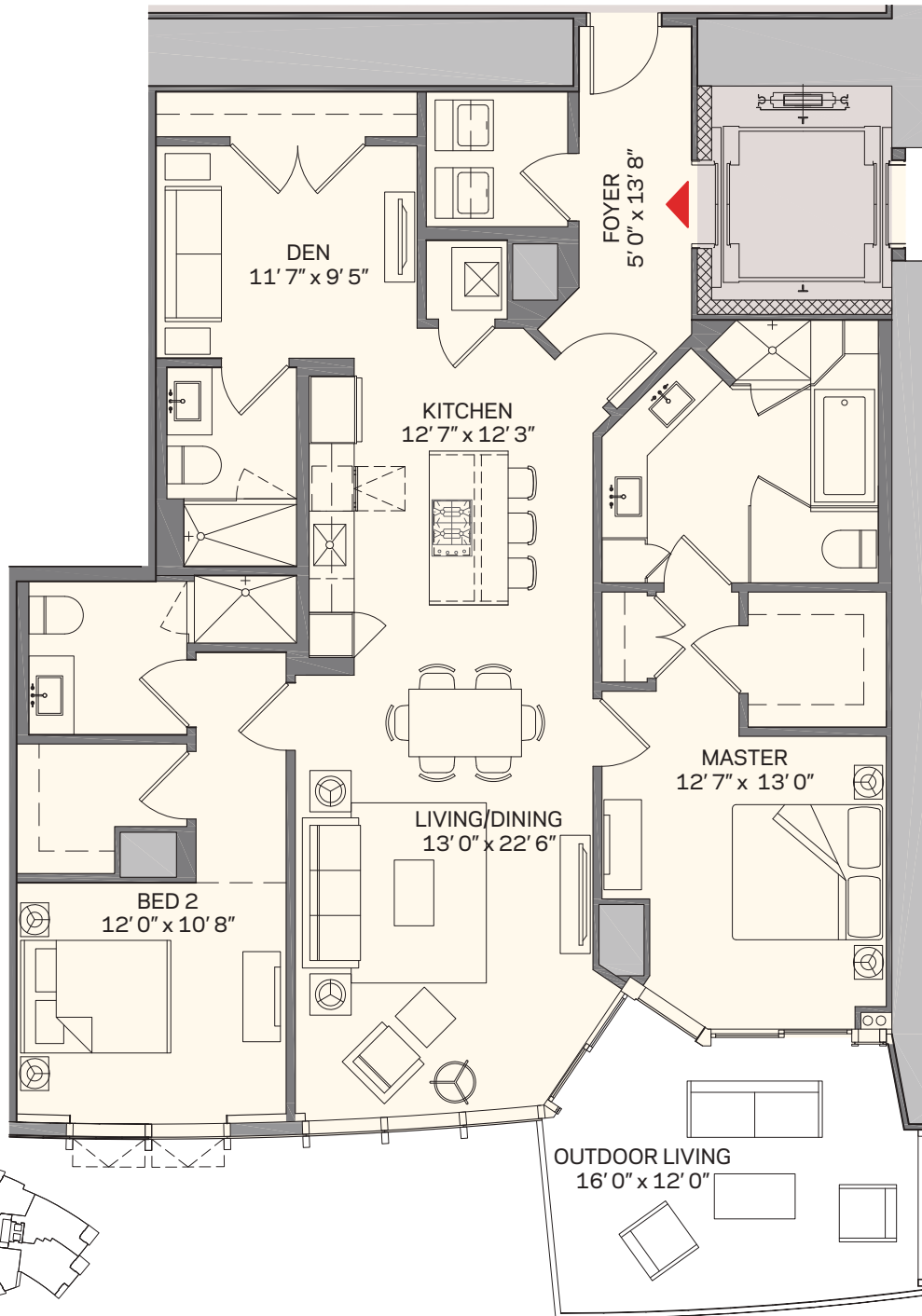
MIAMI WORLDCENTER



RESIDÊNCIA C1 | 08

2 Quartos + Den | 3 Banheiros

Total:	1,835 sq. ft.	170 m ²
Interior:	1,630 sq. ft.	151 m ²
Outdoor:	205 sq. ft.	19 m ²



These drawings are conceptual only and are for the convenience of reference. They should not be relied upon as representations, express or implied, of the final detail of the residences. Units shown are examples of unit types and may not depict actual units. Stated square footages are ranges for a particular unit type and are measured to the exterior boundaries of the exterior walls and the centerline of interior demising walls and in fact vary from the area that would be determined by using the description and definition of the "Unit" set forth in the Declaration (which generally only includes the interior airspace between the perimeter walls and excludes interior structural components). Note that measurements of rooms set forth on this floor plan are generally taken at the greatest points of each given room (as if the room were a perfect rectangle), without regard for any cutouts. Accordingly, the area of the actual room will typically be smaller than the product obtained by multiplying the stated length times width. All dimensions are approximate and may vary with actual construction, and all floor plans and development plans are subject to change.

PARAMOUNT

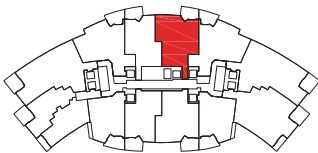
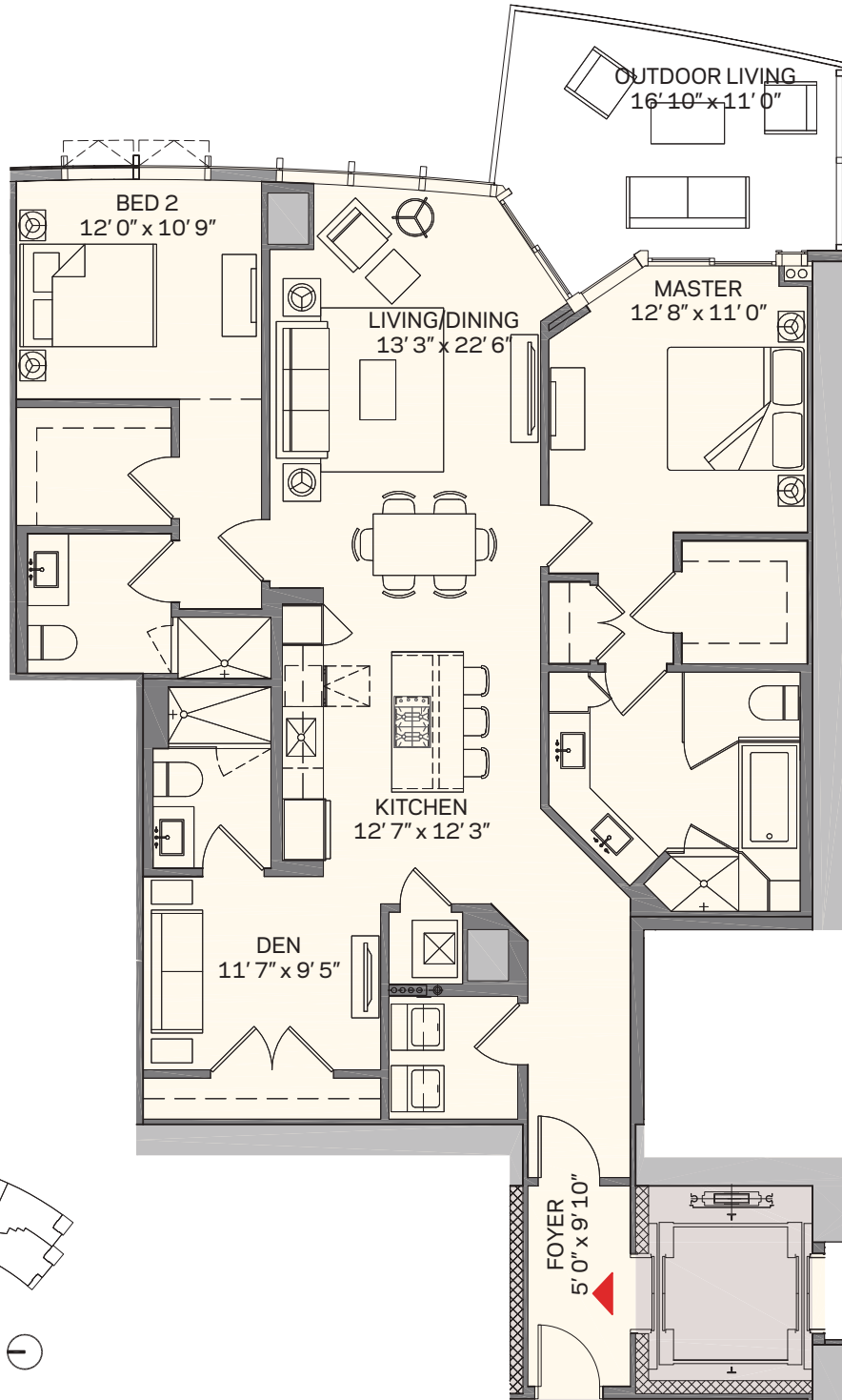
MIAMI WORLDCENTER



RESIDÊNCIA C2 | 07

2 Quartos + Den | 3 Banheiros

Interior:	1.690 sq. ft.	157 m ²
Varanda:	187 sq. ft.	17 m ²
Total:	1.877 sq. ft.	174 m ²



These drawings are conceptual only and are for the convenience of reference. They should not be relied upon as representations, express or implied, of the final detail of the RESIDÊNCIAS. Units shown are examples of unit types and may not depict actual units. Stated square footages are ranges for a particular unit type and are measured to the exterior boundaries of the exterior walls and the centerline of interior demising walls and in fact vary from the area that would be determined by using the description and definition of the "Unit" set forth in the Declaration (which generally only includes the interior airspace between the perimeter walls and excludes interior structural components).

RESIDÊNCIA D1 | 03

2 Quartos + Den | 3 Banheiros

Interior:	1.753 sq. ft.	163 m ²
Varanda:	199 sq. ft.	18 m ²
Total:	1.952 sq. ft.	181 m ²



These drawings are conceptual only and are for the convenience of reference. They should not be relied upon as representations, express or implied, of the final detail of the RESIDÊNCIAS. Units shown are examples of unit types and may not depict actual units. Stated square footages are ranges for a particular unit type and are measured to the exterior boundaries of the exterior walls and the centerline of interior demising walls and in fact vary from the area that would be determined by using the description and definition of the "Unit" set forth in the Declaration (which generally only includes the interior airspace between the perimeter walls and excludes interior structural components).

PARAMOUNT

MIAMI WORLDCENTER



RESIDÊNCIA D2 | 09

2 Quartos + Den | 3 Banheiros

Interior:	1.753 sq. ft.	163 m ²
Varanda:	199 sq. ft.	18 m ²
Total:	1.952 sq. ft.	181 m ²



These drawings are conceptual only and are for the convenience of reference. They should not be relied upon as representations, express or implied, of the final detail of the RESIDÊNCIAS. Units shown are examples of unit types and may not depict actual units. Stated square footages are ranges for a particular unit type and are measured to the exterior boundaries of the exterior walls and the centerline of interior demising walls and in fact vary from the area that would be determined by using the description and definition of the "Unit" set forth in the Declaration (which generally only includes the interior airspace between the perimeter walls and excludes interior structural components).

PARAMOUNT

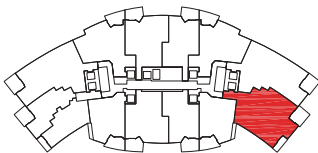
MIAMI WORLDCENTER



RESIDÊNCIA E2 | 12

3 Quartos + Den | 4 Banheiros

Interior:	2.320 sq. ft.	216 m ²
Varanda:	291 sq. ft.	27 m ²
Total:	2.611 sq. ft.	243 m ²



These drawings are conceptual only and are for the convenience of reference. They should not be relied upon as representations, express or implied, of the final detail of the RESIDÊNCIAS. Units shown are examples of unit types and may not depict actual units. Stated square footages are ranges for a particular unit type and are measured to the exterior boundaries of the exterior walls and the centerline of interior demising walls and in fact vary from the area that would be determined by using the description and definition of the "Unit" set forth in the Declaration (which generally only includes the interior airspace between the perimeter walls and excludes interior structural components).

PARAMOUNT

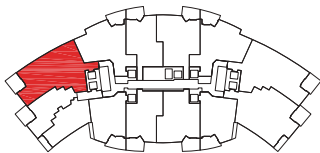
MIAMI WORLDCENTER



RESIDÊNCIA F1 | 01

3 Quartos + Den | 4 Banheiros

Interior:	2.376 sq. ft.	221 m ²
Varanda:	202 sq. ft.	19 m ²
Total:	2.578 sq. ft.	240 m ²



These drawings are conceptual only and are for the convenience of reference. They should not be relied upon as representations, express or implied, of the final detail of the RESIDÊNCIAS. Units shown are examples of unit types and may not depict actual units. Stated square footages are ranges for a particular unit type and are measured to the exterior boundaries of the exterior walls and the centerline of interior demising walls and in fact vary from the area that would be determined by using the description and definition of the "Unit" set forth in the Declaration (which generally only includes the interior airspace between the perimeter walls and excludes interior structural components).

PARAMOUNT

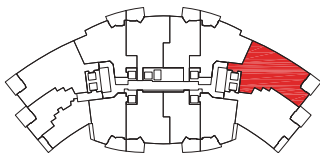
MIAMI WORLDCENTER



RESIDÊNCIA F2 | 11

3 Quartos + Den | 4 Banheiros

Interior:	2.376 sq. ft.	221 m ²
Varanda:	202 sq. ft.	19 m ²
Total:	2.578 sq. ft.	240 m ²



These drawings are conceptual only and are for the convenience of reference. They should not be relied upon as representations, express or implied, of the final detail of the RESIDÊNCIAS. Units shown are examples of unit types and may not depict actual units. Stated square footages are ranges for a particular unit type and are measured to the exterior boundaries of the exterior walls and the centerline of interior demising walls and in fact vary from the area that would be determined by using the description and definition of the "Unit" set forth in the Declaration (which generally only includes the interior airspace between the perimeter walls and excludes interior structural components).

PARAMOUNT

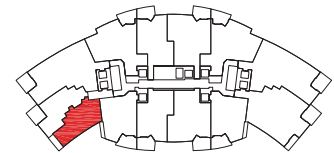
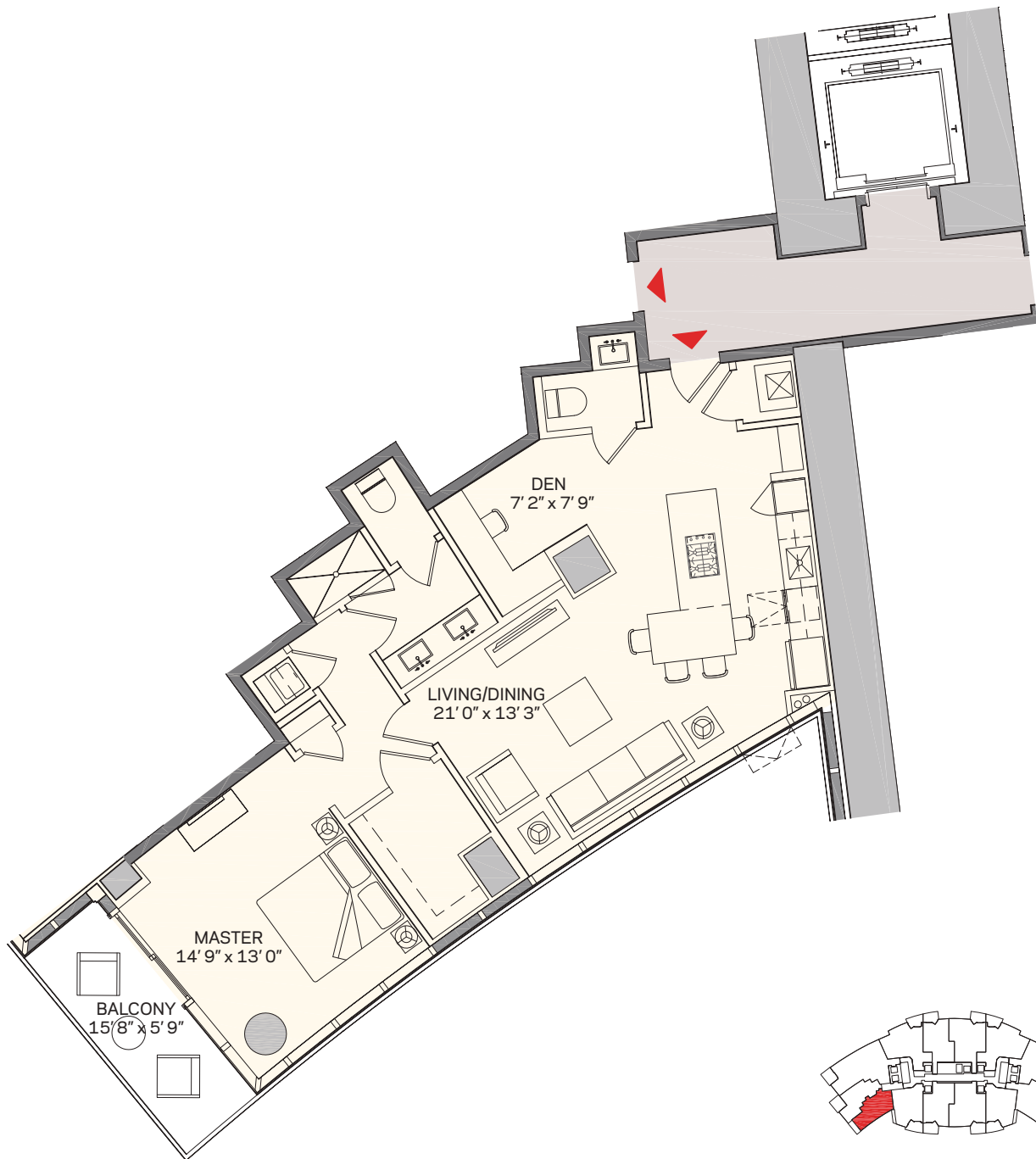
MIAMI WORLDCENTER



RESIDÊNCIA M | 02

1 Quartos + Den | 1.5 Banheiros

Total: 1,186 sq. ft. | 110 m²
Interior: 1,095 sq. ft. | 102 m²
Outdoor: 91 sq. ft. | 9 m²



These drawings are conceptual only and are for the convenience of reference. They should not be relied upon as representations, express or implied, of the final detail of the residences. Units shown are examples of unit types and may not depict actual units. Stated square footages are ranges for a particular unit type and are measured to the exterior boundaries of the exterior walls and the centerline of interior demising walls and in fact vary from the area that would be determined by using the description and definition of the "Unit" set forth in the Declaration (which generally only includes the interior airspace between the perimeter walls and excludes interior structural components). Note that measurements of rooms set forth on this floor plan are generally taken at the greatest points of each given room (as if the room were a perfect rectangle), without regard for any cutouts. Accordingly, the area of the actual room will typically be smaller than the product obtained by multiplying the stated length times width. All dimensions are approximate and may vary with actual construction, and all floor plans and development plans are subject to change.

PARAMOUNT

MIAMI WORLDCENTER



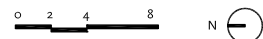
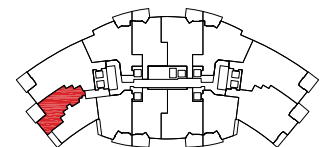
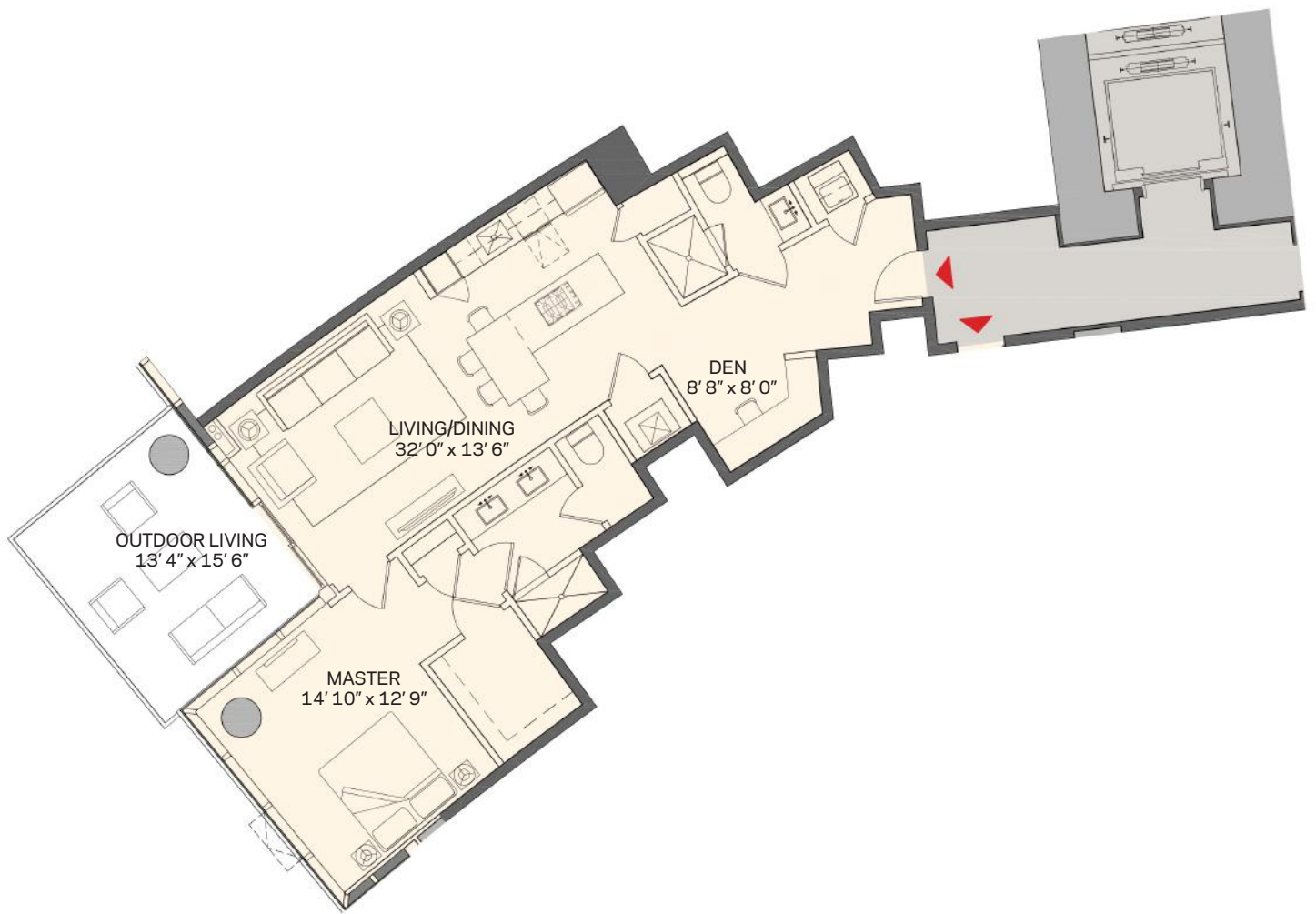
RESIDÊNCIA N | 00

1 Quartos + Den | 2 Banheiros

Total: 1,346 sq. ft. | 125 m²

Interior: 1,145 sq. ft. | 106 m²

Outdoor: 201 sq. ft. | 19 m²



These drawings are conceptual only and are for the convenience of reference. They should not be relied upon as representations, express or implied, of the final detail of the residences. Units shown are examples of unit types and may not depict actual units. Stated square footages are ranges for a particular unit type and are measured to the exterior boundaries of the exterior walls and the centerline of interior demising walls and in fact vary from the area that would be determined by using the description and definition of the "Unit" set forth in the Declaration (which generally only includes the interior airspace between the perimeter walls and excludes interior structural components). Note that measurements of rooms set forth on this floor plan are generally taken at the greatest points of each given room (as if the room were a perfect rectangle), without regard for any cutouts. Accordingly, the area of the actual room will typically be smaller than the product obtained by multiplying the stated length times width. All dimensions are approximate and may vary with actual construction, and all floor plans and development plans are subject to change.

PARAMOUNT

MIAMI WORLDCENTER



213 metros

500+ Residências

Residências | Andares 8 a 54

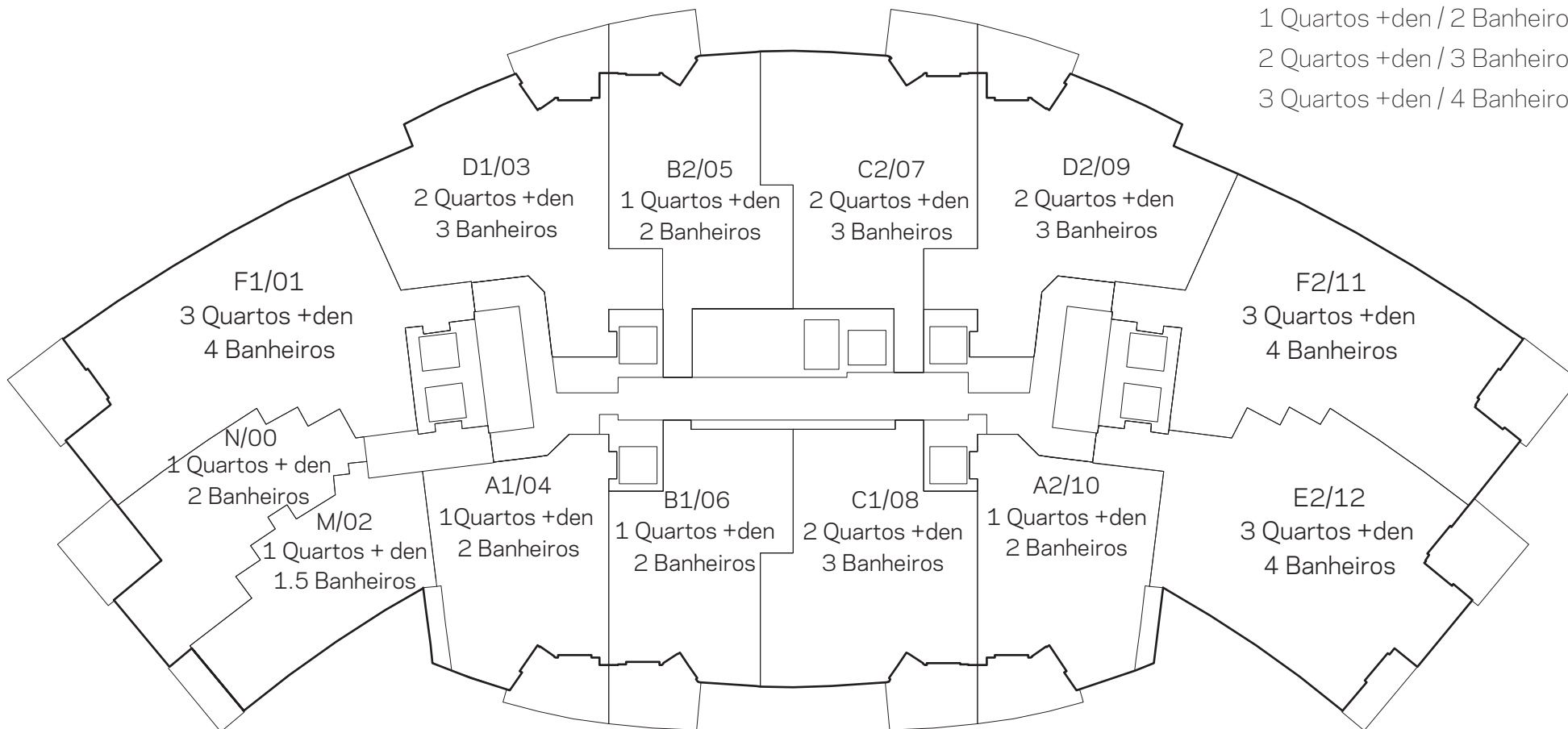
Tipos de residências padrão

1 Quartos + den / 1.5 Banheiros

1 Quartos +den / 2 Banheiros

2 Quartos +den / 3 Banheiros

3 Quartos +den / 4 Banheiros



These drawings are conceptual only and are for the convenience of reference. They should not be relied upon as representations, express or implied, of the final detail of the Residences. Units shown are examples of unit types and may not depict actual units. Stated square footages are ranges for a particular unit type and are measured to the exterior boundaries of the exterior walls and the centerline of interior demising walls and in fact vary from the area that would be determined by using the description and definition of the "Unit" set forth in the Declaration (which generally only includes the interior airspace between the perimeter walls and excludes interior structural components).